



COLUMBUS CITY SCHOOLS
2018 FACILITIES TASK FORCE

COMMUNITY PRESENTATIONS



DR. JOHN STANFORD

**COLUMBUS CITY SCHOOLS
INTERIM SUPERINTENDENT**

THE ROLE OF THE FACILITIES TASK FORCE

COMMUNITY-LED TASK FORCE SUPPORTED BY DISTRICT STAFF WHO RECOMMENDED PROCESS FOR SCREENING BASED ON NATIONAL BEST-PRACTICE, LOCAL HISTORICAL WORK, AND SUBJECT-MATTER EXPERTISE.

REVIEW DATA AND MAKE RECOMMENDATIONS ON SCHOOLS AND ADMINISTRATIVE BUILDINGS FOR CLOSING OR CHANGING ATTENDANCE BOUNDARIES AND/OR GRADE CONFIGURATIONS.

PROVIDE RECOMMENDATIONS THAT HAVE A **STATEMENT OF RATIONALE**.

RECOMMENDATIONS WILL BE BASED ON OVERALL BALANCE AND **OBJECTIVITY OF FACTORS LISTED IN BOARD POLICY 7105**.

ISSUE DRAFT REPORT TO THE BOARD OF EDUCATION BY THE END OF AUGUST. **FINAL REPORT BY OCTOBER**.

TIMELINE

APRIL 12	2018 Facilities Task Force Organizational Meeting	X
APRIL 27	School Work Group proposes and Task Force approves recommended criteria for initial screening of schools.	X
MAY 10	Task Force approves recommended criteria for initial screening of administrative sites.	X
MAY 25	School Work Group shares school-specific data on Phase 1 initial screening of all schools.	X
JUNE 14	CANCELLED	X
JUNE 29	School Work Group shares Residential Growth Info. Administrative Site Work Group shares results of Phase 1 screening of all administrative buildings.	X
AUGUST 17	School Work Group presents results of Phase 2 and 3 screenings, offer recommendations for consideration.	X
AUGUST 20	Administrative Site Work Group presents results of Phase 2 and 3 screenings, offers recommendations.	X
AUGUST 30	Facilities Task Force finalizes Draft Recommendations on School and Administrative Sites.	X
SEPTEMBER 4	Presentation of Facilities Task Force Draft Recommendations to Board of Education.	X
SEPTEMBER	Community outreach and public meetings to gather feedback on Draft Recommendations.	
OCTOBER	Facilities Task Force to offer Final Recommendations on School and Administrative Sites to Board of Education.	
NOVEMBER	Vote by the Board of Education on the 2018 Facilities Task Force Final Recommendations.	



COLUMBUS CITY SCHOOLS
2018 FACILITIES TASK FORCE

UNDERSTANDING THE PROCESS

UNDERSTANDING THE PROCESS

THREE PHASE CRITERIA

**BENEFIT TO STUDENTS /
EFFECTIVE USE OF RESOURCES**

QUANTITATIVE DATA

QUALITATIVE ANALYSIS

IMPACT POTENTIAL

UNDERSTANDING THE PROCESS

(SCHOOL SITE CRITERIA)

PHASE 1 CRITERIA	PHASE 2 CRITERIA		PHASE 3 CRITERIA
STUDENT ENROLLMENT	EDUCATIONAL PROGRAM	RESIDENTIAL TRENDS	RELOCATION
BUILDING UTILIZATION	SAFETY AND ACCESS	LOTTERY WAITLIST	BURDEN
BUILDING CONDITION	ACCESSIBILITY	GRADE BAND DESIGN	DIVERSITY
STUDENT TRANSFER IN/OUT RATES	FUTURE USE	EVENT ACCOMMODATION	SPACE TO ACCOMMODATE CHOICE
	CIRCUMSTANCE	DISTRICT OPTIONS AND LIMITATIONS	ABILITY TO MAINTAIN FEEDER PATTERNS
	LOCATION AND SITE CHARACTERISTICS	WORK ORDER/FAMIS	ACADEMIC GROWTH



COLUMBUS CITY SCHOOLS
2018 FACILITIES TASK FORCE

SCHOOL RECOMMENDATIONS

SCHOOL RECOMMENDATION

SCHOOLS IMPACTED

HIGHLAND ELEMENTARY

WEST BROAD ELEMENTARY

WESTGATE ELEMENTARY

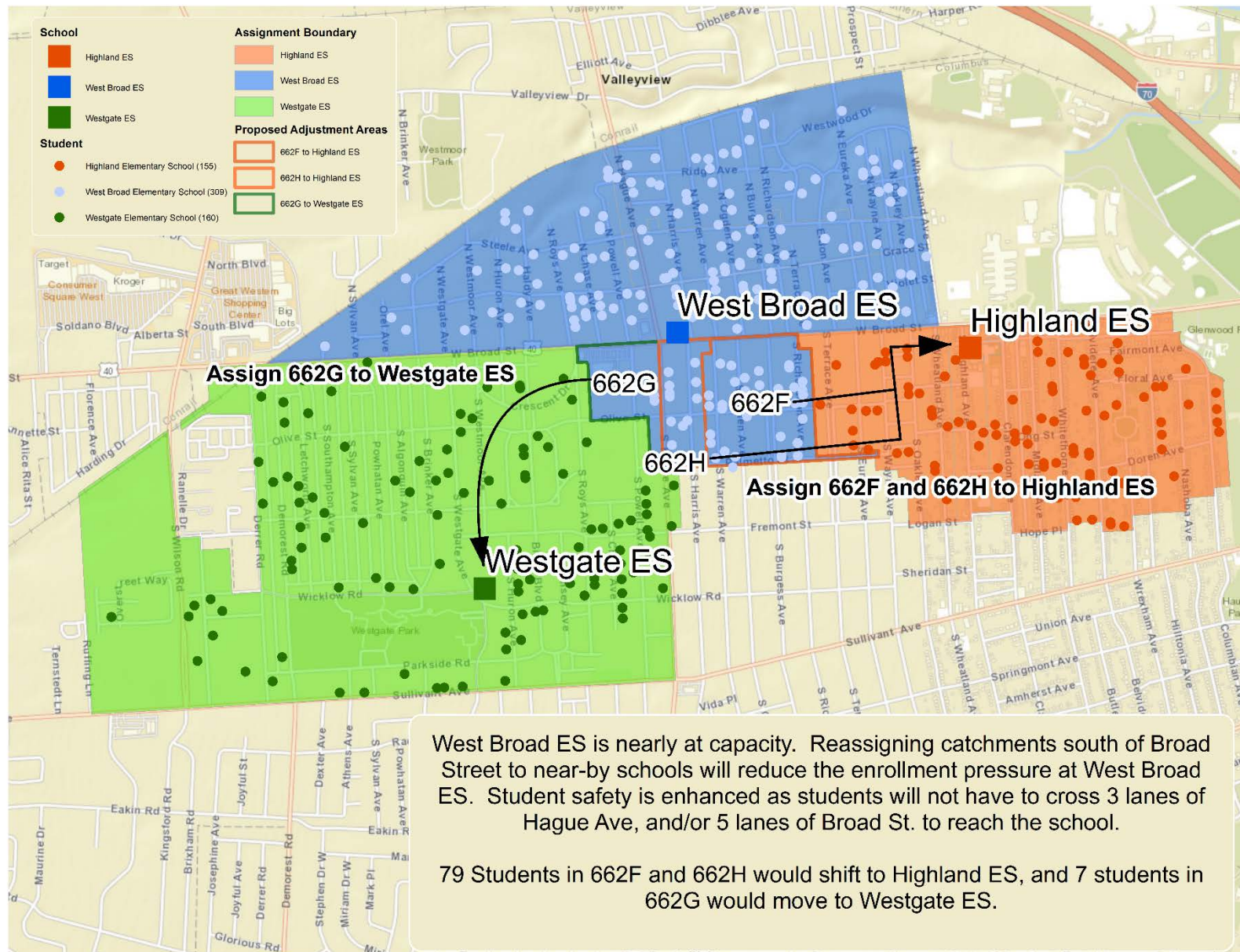
SCHOOLS IMPACTED	PROPOSED RECOMMENDATION
HIGHLAND ELEMENTARY	ADJUST ATTENDANCE BOUNDARY
WEST BROAD ELEMENTARY	ADJUST ATTENDANCE BOUNDARY
WESTGATE ELEMENTARY	ADJUST ATTENDANCE BOUNDARY

SCHOOL RECOMMENDATION

Adjust attendance boundaries for Highland Elementary, West Broad Elementary, and Westgate Elementary to better balance student enrollment and building utilization and to improve safe access for students in the neighborhood.

POINTS TO CONSIDER:

- Four schools in this area need to be considered: Highland Elementary, West Broad Elementary, Westgate Elementary, Valleyview Elementary. Only Highland has received major Operation: Fix It repairs so far.
- Closure of any of these buildings could create capacity strain and limit enrollment options on West Side.
- New attendance boundaries would align with Broad Street and Hague Avenue to improve safe access by preventing students from crossing major roadways in the area.
- Changes would balance utilization/enrollment across all three buildings.



SCHOOL RECOMMENDATION

SCHOOLS IMPACTED

HIGHLAND ELEMENTARY

WEST BROAD ELEMENTARY

WESTGATE ELEMENTARY

BY A SHOW OF HANDS...

**WHO IS HERE TO TALK MORE
ABOUT THIS SCHOOL RECOMMENDATION?**

SCHOOL RECOMMENDATION

SCHOOLS IMPACTED

NORTH LINDEN ELEMENTARY

MAIZE ELEMENTARY

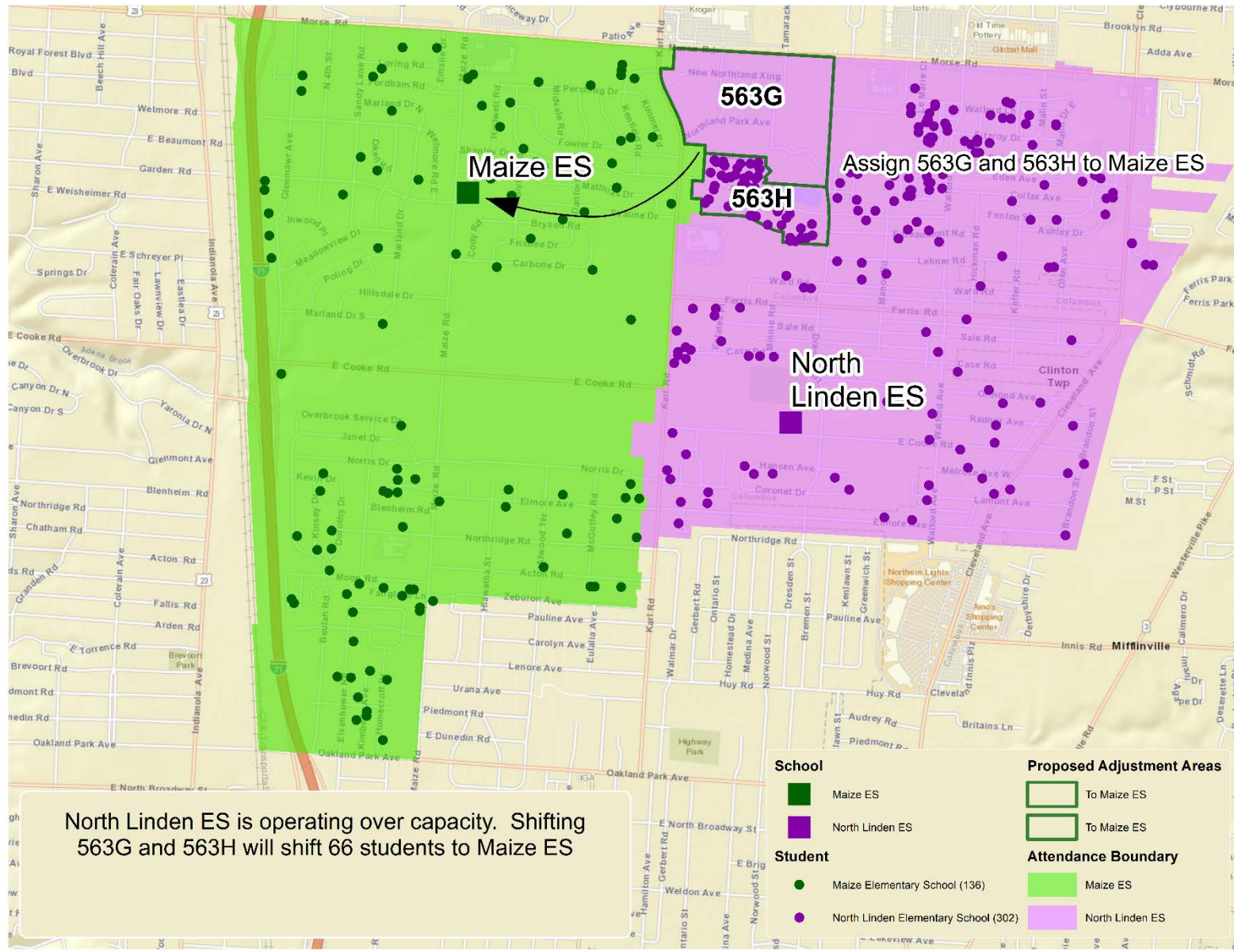
SCHOOLS IMPACTED	PROPOSED RECOMMENDATION
NORTH LINDEN ELEMENTARY	ADJUST ATTENDANCE BOUNDARY
MAIZE ELEMENTARY	ADJUST ATTENDANCE BOUNDARY

SCHOOL RECOMMENDATION

Adjust attendance boundaries for North Linden Elementary and Maize Elementary to better balance student enrollment and building utilization.

POINTS TO CONSIDER:

- Maize Elementary is under capacity/under-enrolled, while North Linden is over capacity/over-enrolled.
- The move addresses utilization concerns at Maize and some of the enrollment limitations currently in place at North Linden.
- Change in attendance boundary impacts two catchment zones (one of which is non-residential), so there will be minor transportation changes.
- A new English-as-a-Second-Language Unit will likely need to be established at Maize (which would relieve pressure on current ESL unit at North Linden).



SCHOOL RECOMMENDATION

SCHOOLS IMPACTED

NORTH LINDEN ELEMENTARY

MAIZE ELEMENTARY

BY A SHOW OF HANDS...

**WHO IS HERE TO TALK MORE
ABOUT THIS SCHOOL RECOMMENDATION?**

SCHOOL RECOMMENDATION

SCHOOLS IMPACTED

COLUMBUS NORTH INTERNATIONAL

COLUMBUS GLOBAL ACADEMY

DOMINION MIDDLE SCHOOL

COLUMBUS SPANISH IMMERSION ACADEMY

ECOLE KENWOOD FRENCH IMMERSION

HUBBARD MASTERY SCHOOL

SCHOOLS IMPACTED	PROPOSED RECOMMENDATION
COLUMBUS NORTH INTERNATIONAL	MOVE TO BROOKHAVEN / CO-LOCATE WITH COLUMBUS GLOBAL ACADEMY / CONVERT TO 9-12 ONLY HIGH SCHOOL (MOVE GRADE 7-8 TO DOMINION)
COLUMBUS GLOBAL ACADEMY	OFFER STUDENT RESERVATION INTO INTERNATIONAL HIGH SCHOOL
DOMINION MIDDLE SCHOOL	MOVE TO NORTH HIGH SCHOOL / EXPAND ACADEMIC OFFERING TO INCLUDE SPECIALIZED LANGUAGE PROGRAMMING
COLUMBUS SPANISH IMMERSION ACADEMY	MOVE 6 th GRADE
ECOLE KENWOOD FRENCH IMMERSION	MOVE 6 th GRADE
HUBBARD MASTERY SCHOOL	MOVE 6 th GRADE

SCHOOL RECOMMENDATION 3

Move Columbus North International into the former Brookhaven High School to co-locate with the current Columbus Global Academy to fully utilize the Brookhaven site and advance a FMP recommendation to co-locate the programs AND move Dominion Middle School into the larger North High School site, expand Dominion’s academic program to include language programs for Grades 6-8 (in Spanish, French, and Mandarin), move Grade 6 from Columbus Spanish Immersion Academy, Ecole Kenwood French Immersion, and Hubbard Mastery into the new Dominion to provide improved academic options.

SPECIAL NOTE: It’s recommended that this proposal be implemented for the 2020-2021 school year.

POINTS TO CONSIDER:

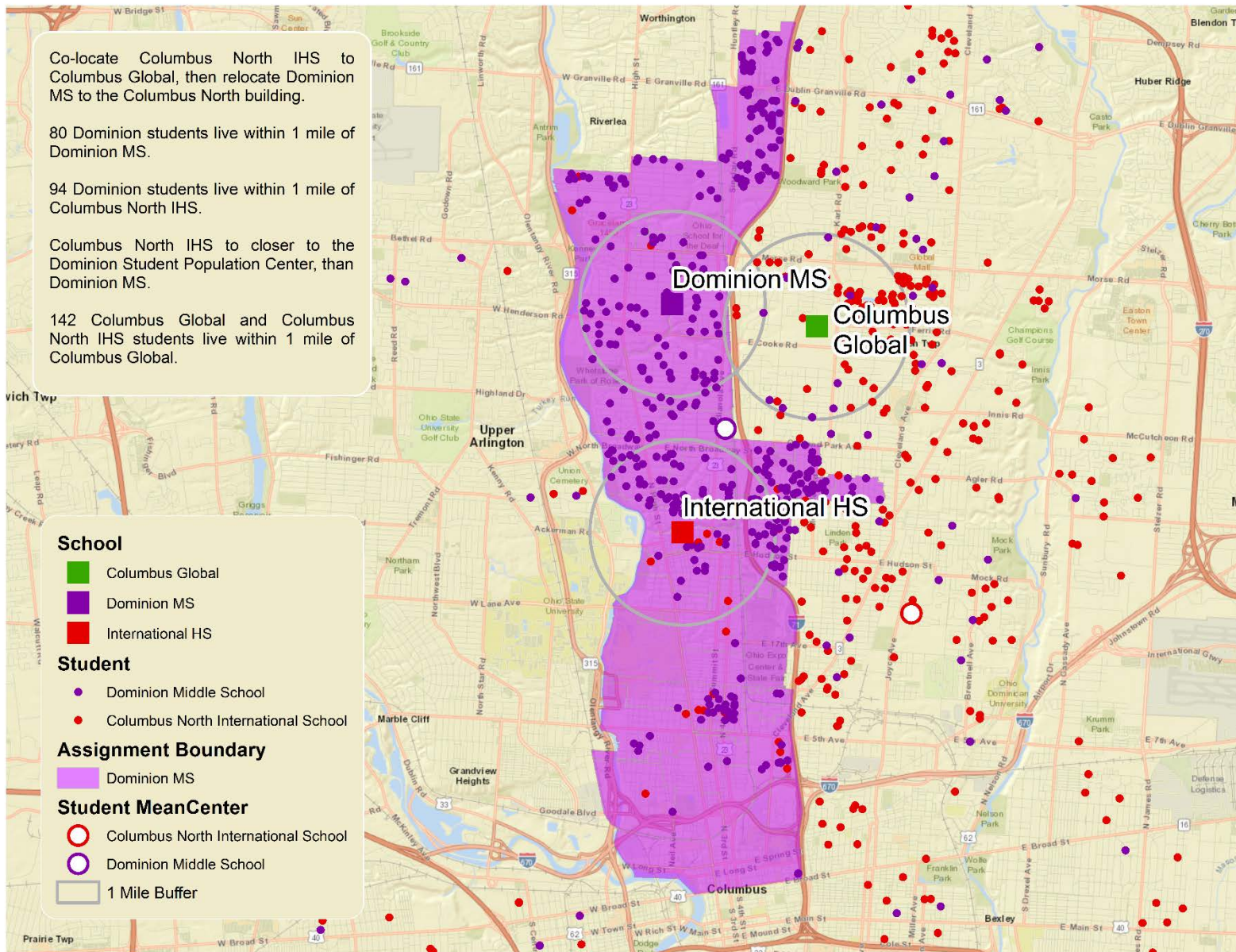
- **FULL UTILIZATIONS:** Capacity at the Brookhaven site would be fully utilized if both CNIS and Global Academy occupy building.
- **COMMUNITY SUPPORT:** Co-location of CNIS and Global Academy received favorable community responses as part of the most recent Facilities Master Planning process.
- **GRADE BAND:** Restoring International High School to a 9-12 High School (instead of 7-12) also complies with favorable community support in the recent Facilities Master Planning process to have more traditional grade banding (K-5 Elementary, 6-8 Middle School, 9-12 High School).
- To further address enrollment, Global students could be given a reservation at International High School if they would choose not to go back to their home school after completing the Global curriculum.

POINTS TO CONSIDER:

- **OVERCROWDING:** The North High School building is located within the Dominion Middle School community and would provide much-needed space for Dominion's program, which is currently operating at approximately 120% of its current building capacity.
- **IMPROVED STRUCTURE:** The North building is in good condition, having received major repairs (\$1.8 million) over last two years, and the building's high-school-level features would be a boost for Dominion's educational and extra-curricular offerings (larger updated science labs, larger fixed-seat theater space).
- **ACADEMICS:** Recommendation provides unique opportunity to work with staff and families to re-envision Dominion program, broaden STEAM learning, and offer a District-first middle language immersion curriculum (which would require additional year of planning with implementation in the 2020-2021 school year).

POINTS TO CONSIDER:

- **TRANSFERS:** Language immersion students from CSIA and Ecole Kenwood and students from Hubbard Mastery (which includes a Mandarin language program) would have a dedicated middle school program allowing them to continue their academic pathway.
- Creation of a dedicated middle school for our language immersion and mastery programs would address family concerns about where students go after their elementary experience (and eliminate the high 6th grade transfer rates out of CSIA and Ecole Kenwood).
- **WAITLIST:** By moving 6th grade out of CSIA, Ecole Kenwood, and Hubbard Mastery, we open new space in each program that might allow for an increase in enrollment and reduction in student waitlist.
- **TRUE MIDDLE SCHOOL:** Providing a true middle school experience for our Language Immersion and Mastery 6th grade students, as well as our 7th and 8th grade students from International, complies with favorable community support in the recent Facilities Master Planning process to have more traditional grade banding.



SCHOOL RECOMMENDATION

SCHOOLS IMPACTED

COLUMBUS NORTH INTERNATIONAL

COLUMBUS GLOBAL ACADEMY

DOMINION MIDDLE SCHOOL

COLUMBUS SPANISH IMMERSION ACADEMY

ECOLE KENWOOD FRECH IMMERSION

HUBBARD MASTERY SCHOOL

BY A SHOW OF HANDS...

**WHO IS HERE TO TALK MORE
ABOUT THIS SCHOOL RECOMMENDATION?**

SCHOOL RECOMMENDATION

SCHOOLS IMPACTED	
EAST HIGH SCHOOL	SOUTH MIFFLIN STEM K-6
LINDEN-McKINLEY STEM ACADEMY	WINDSOR STEM K-6
HAMILTON STEM K-6	MEDINA MIDDLE SCHOOL
LINDEN STEM K-6	MIFFLIN MIDDLE SCHOOL

SCHOOL RECOMMENDATION

Convert Linden-McKinley STEM Academy (7-12) into a Middle School (6-8), create a new East High School Feeder Pattern, adjust enrollment at several elementary schools (converting from K-6 to K-5 and adding Pre-K where possible), move ESL units from Medina Middle School and Mifflin Middle School to Linden-McKinley, merge Medina Middle School and Mifflin Middle School, and close Mifflin Middle School.

SPECIAL NOTE: It is recommended that this proposal be implemented in the 2020-2021 school year.

DETAILS OF THE RECOMMENDATION:

- Linden-McKinley STEM Academy would be converted into Linden-McKinley STEM Middle School, retaining the current Grades 7-8 and moving Grades 9-12 from Linden-McKinley to East High School.
- East High School's feeder pattern - which currently includes Champion Middle School, East Columbus Elementary, Eastgate Elementary, Ohio Avenue Elementary, and Trevitt Elementary - would expand to include the new Linden-McKinley STEM Middle School, Hamilton STEM, Linden STEM, South Mifflin STEM, and Windsor STEM.
- Grade 6 from Hamilton STEM, Linden STEM, South Mifflin STEM, and Windsor STEM would move to the new Linden-McKinley STEM Middle School.

SCHOOL RECOMMENDATION

Convert Linden-McKinley STEM Academy (7-12) into a Middle School (6-8), create a new East High School Feeder Pattern, adjust enrollment at several elementary schools (converting from K-6 to K-5 and adding Pre-K where possible), move ESL units from Medina Middle School and Mifflin Middle School to Linden-McKinley, merge Medina Middle School and Mifflin Middle School, and close Mifflin Middle School.

SPECIAL NOTE: It is recommended that this proposal be implemented in the 2020-2021 school year.

DETAILS OF THE RECOMMENDATION:

- Middle school English-as-a-Second-Language Units (including the ESL Sheltered Site) at Medina Middle School and Mifflin Middle School would move to the new Linden-McKinley STEM Middle School.
- The remaining enrollments at Medina Middle School and Mifflin Middle School would merge, the attendance boundary for Medina Middle would expand to include the current Mifflin Middle neighborhood catchment boundary, and Mifflin Middle School would be closed.

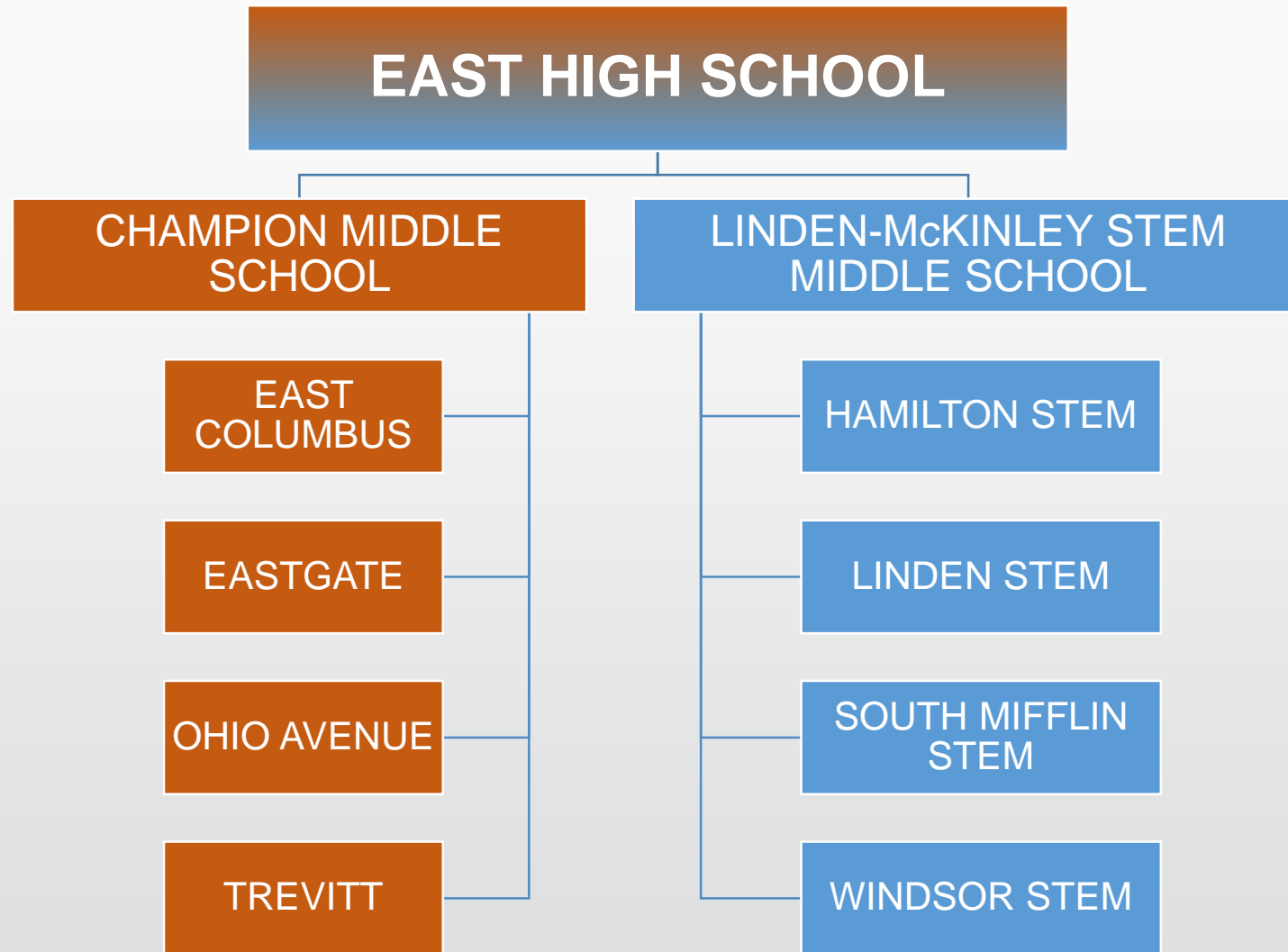
SCHOOLS IMPACTED	PROPOSED RECOMMENDATION
LINDEN-McKINLEY STEM ACADEMY	CONVERT TO LINDEN-McKINLEY STEM MIDDLE SCHOOL / MOVE 9-12 GRADES TO EAST HIGH SCHOOL
EAST HIGH SCHOOL	ADJUST FEEDER PATTERN TO INCLUDE LINDEN-McKINLEY MIDDLE SCHOOL, MERGE HEALTH SCIENCES AND STEM ACADEMIC PROGRAMS
HAMILTON STEM K-6	MOVE 6 th GRADE TO LINDEN-McKINLEY STEM MIDDLE SCHOOL
LINDEN STEM K-6	MOVE 6 th GRADE TO LINDEN-McKINLEY STEM MIDDLE SCHOOL
SOUTH MIFFLIN STEM K-6	MOVE 6 th GRADE TO LINDEN-McKINLEY STEM MIDDLE SCHOOL
WINDSOR STEM K-6	MOVE 6 th GRADE TO LINDEN-McKINLEY STEM MIDDLE SCHOOL
MEDINA MIDDLE SCHOOL	MOVE ESL UNITS TO LINDEN-McKINLEY STEM MIDDLE SCHOOL / ADJUST ATTENDANCE BOUNDARY TO INCLUDE MIFFLIN MIDDLE SCHOOL CATCHMENT.
MIFFLIN MIDDLE SCHOOL	MOVE ESL UNITS TO LINDEN-McKINLEY STEM MIDDLE SCHOOL / MOVE GRADE 6-9 TO MEDINA MIDDLE SCHOOL / CLOSE

POINTS TO CONSIDER:

- **FULL UTILIZATIONS:** Building utilization at both East High School and Linden-McKinley High School are extremely low: East currently stands at only 51% and Linden-McKinley is at 76%.
- **ACADEMICS:** Having two middle schools feeding into East High School would address utilization concerns. The larger enrollment at East might also allow for more robust and diverse educational opportunities and extra-curricular offerings.
- **GRADE BAND:** Converting Linden-McKinley to a 6-8 Middle School (instead of 7-12) complies with favorable community support in the recent Facilities Master Planning process to have more traditional grade banding (K-5 Elementary, 6-8 Middle School, 9-12 High School).
- **MORE ELEMENTARY SPACE:** By moving Grade 6 out of the STEM Elementary Schools, we provide space to better address non-academic barriers, potentially open new space for Pre-Kindergarten (pending funding and staffing), and comply with favorable community support in the recent Facilities Master Planning process to have more traditional grade banding.
- **IMPROVED ESL SERVICE:** Building utilization at the new Linden-McKinley STEM Middle School is improved, especially with addition of the ESL Sheltered Site and ESL Units from Mifflin Middle School and Medina Middle School. Those ESL Unit would also benefit from the updated spaces with the Linden-McKinley building, which is a new building (with air conditioning).

POINTS TO CONSIDER:

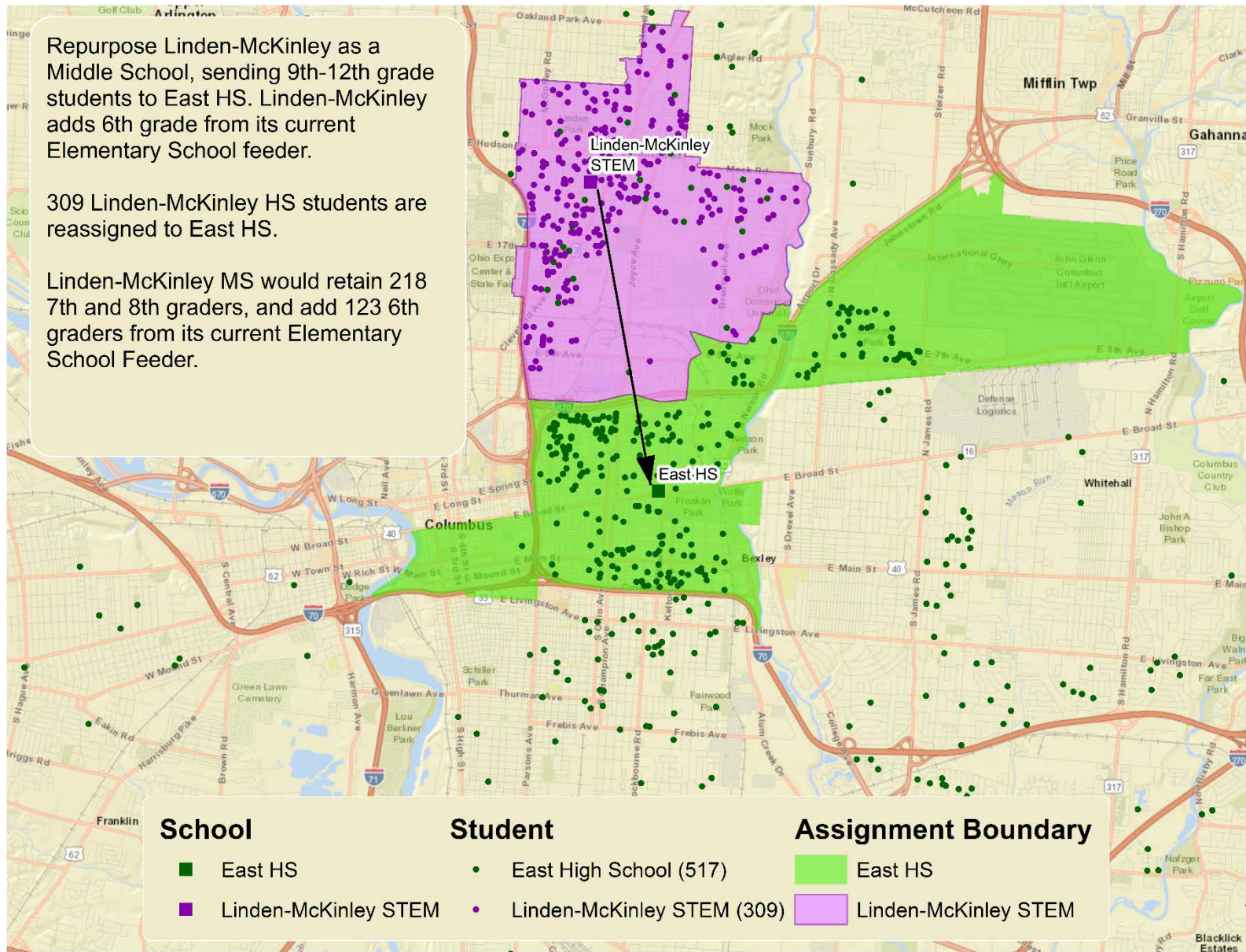
- Combining Mifflin Middle School and Medina Middle School allows the District to close the Mifflin Middle School building, which has significant infrastructure needs.
- Because Mifflin Middle School and Medina Middle School feed into Mifflin High School, this move might also have a slight positive impact on enrollment at Mifflin High School and reduce growing demand on ESL programming at the high school.
- **TRUE MIDDLE SCHOOL:** Linden-McKinley becomes a dedicated STEM-focused middle school, and students in Grades 6-8 receive a true Middle School experience. The site also becomes a regional Middle School Sports hub.
- **POINT OF PRIDE:** High school buildings are often a focal point of pride and history in a community. By maintaining the Linden-McKinley building, the neighborhood retain this point of pride in the school.
- **TWO YEAR IMPLEMENTATION:** East High School is currently part of the Ohio State University Health Sciences Academies; by adding an extra year for implementation (delaying until the 2020-2021 school year), the District has an opportunity to work with the school, its families, and our partners to re-envision and incorporate STEM into this successful program.



Repurpose Linden-McKinley as a Middle School, sending 9th-12th grade students to East HS. Linden-McKinley adds 6th grade from its current Elementary School feeder.

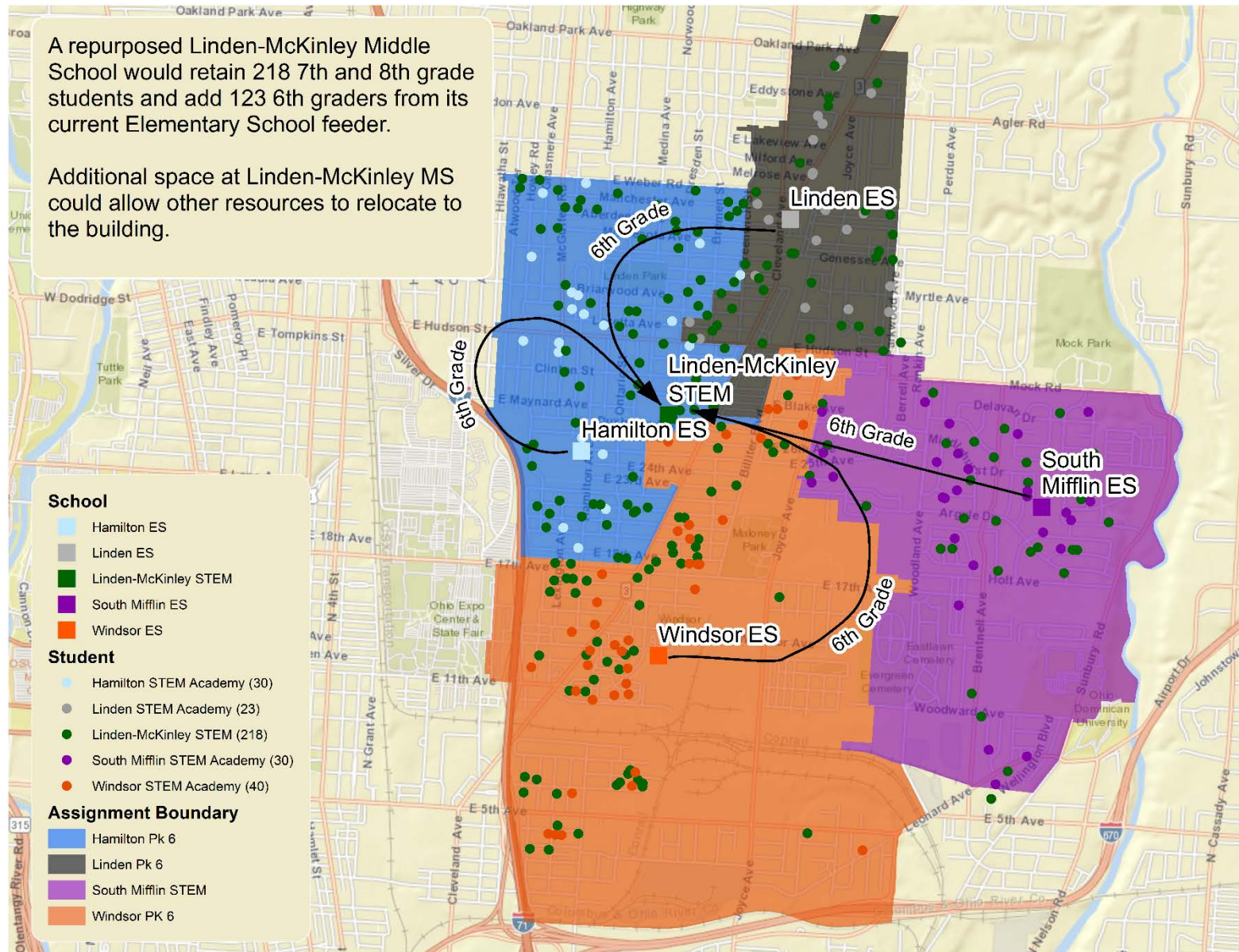
309 Linden-McKinley HS students are reassigned to East HS.

Linden-McKinley MS would retain 218 7th and 8th graders, and add 123 6th graders from its current Elementary School Feeder.

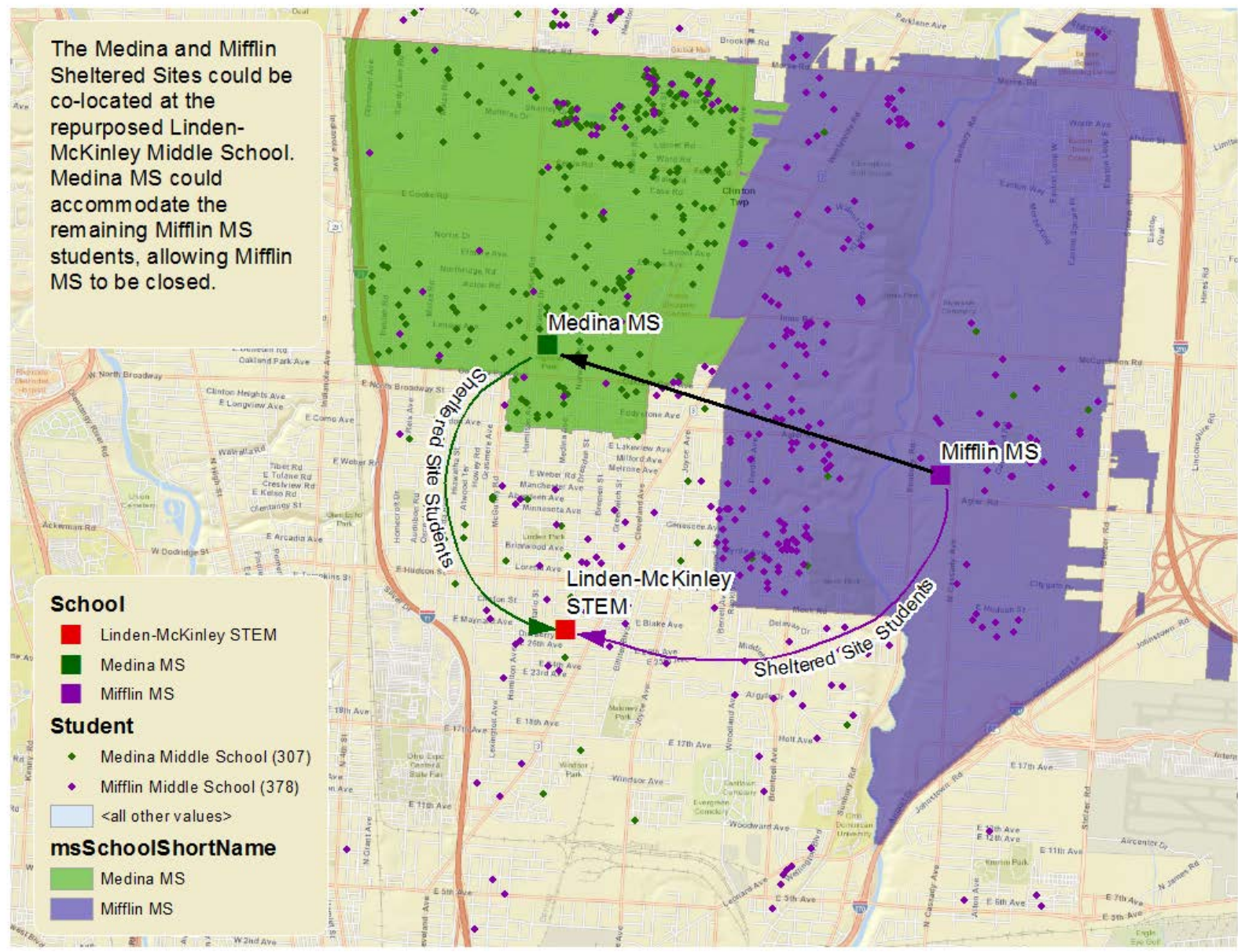


A repurposed Linden-McKinley Middle School would retain 218 7th and 8th grade students and add 123 6th graders from its current Elementary School feeder.

Additional space at Linden-McKinley MS could allow other resources to relocate to the building.



The Medina and Mifflin Sheltered Sites could be co-located at the repurposed Linden-McKinley Middle School. Medina MS could accommodate the remaining Mifflin MS students, allowing Mifflin MS to be closed.



SCHOOL RECOMMENDATION

SCHOOLS IMPACTED	
EAST HIGH SCHOOL	SOUTH MIFFLIN STEM K-6
LINDEN-McKINLEY STEM ACADEMY	WINDSOR STEM K-6
HAMILTON STEM K-6	MEDINA MIDDLE SCHOOL
LINDEN STEM K-6	MIFFLIN MIDDLE SCHOOL

BY A SHOW OF HANDS...

**WHO IS HERE TO TALK MORE
ABOUT THIS SCHOOL RECOMMENDATION?**

SCHOOL RECOMMENDATION

SCHOOLS IMPACTED	
MARION FRANKLIN HIGH SCHOOL	MOLER ELEMENTARY K-6
BUCKEYE MIDDLE SCHOOL	STEWART ELEMENTARY K-6
SOUTH HIGH SCHOOL 7-12	SOUTHWOOD ELEMENTARY K-6
SIEBERT ELEMENTARY K-6	CEDARWOOD ELEMENTARY
FAIRWOOD ELEMENTARY K-6	PARSONS ELEMENTARY
LINCOLN PARK ELEMENTARY K-6	WATKINS ELEMENTARY
LIVINGSTON ELEMENTARY K-6	

SCHOOL RECOMMENDATION

Convert Marion-Franklin into a Middle School (6-8), create new South High School Feeder Pattern (with South as a 9-12 High School), close Buckeye Middle School and Siebert Elementary, adjust neighborhood catchment boundaries for Stewart Elementary and Southwood Elementary, and adjust enrollment for several elementary schools (converting from K-6 to K-5 and adding Pre-K where possible).

DETAILS OF THE RECOMMENDATION:

- Marion-Franklin High School would be converted into Marion-Franklin Middle School, moving Grades 9-12 from Marion-Franklin to South High School and closing Buckeye Middle School, with students instead sent to the new Marion-Franklin Middle School.
- South High School, which currently serves Grades 7-12, would convert back to a traditional High School serving Grade 9-12. South's 7-8 Grades would move to Marion-Franklin Middle School.
- Grade 6 from Fairwood K-6, Lincoln Park K-6, Livingston K-6, Moler K-6, Stewart K-6, and Southwood K-6 would move to the new Marion-Franklin Middle School.
- The feeder pattern for Cedarwood Elementary, Parsons Elementary, and Watkins Elementary would change to go to Marion-Franklin Middle School (instead of Buckeye Middle School).
- Attendance boundaries for Southwood Elementary and Stewart Elementary would be expanded to include current Siebert neighborhood, and Siebert Elementary would be closed.

SCHOOLS IMPACTED	PROPOSED RECOMMENDATION
MARION FRANKLIN HIGH SCHOOL	CONVERT TO MARION FRANKLIN MIDDLE SCHOOL / MOVE 9-12 GRADES TO SOUTH HIGH SCHOOL
BUCKEYE MIDDLE SCHOOL	CLOSE (STUDENTS SENT TO NEW MARION FRANKLIN MIDDLE SCHOOL)
SOUTH HIGH SCHOOL 7-12	CONVERT TO HIGH SCHOOL ONLY (9-12) / MOVE 7-8 GRADES TO MARION FRANKLIN MIDDLE SCHOOL
SIEBERT ELEMENTARY K-6	CLOSE (STUDENTS SENT TO STEWART/SOUTHWOOD)
FAIRWOOD ELEMENTARY K-6	MOVE 6 th GRADE TO MARION FRANKLIN MIDDLE SCHOOL
LINCOLN PARK ELEMENTARY K-6	MOVE 6 th GRADE TO MARION FRANKLIN MIDDLE SCHOOL
LIVINGSTON ELEMENTARY K-6	MOVE 6 th GRADE TO MARION FRANKLIN MIDDLE SCHOOL
MOLER ELEMENTARY K-6	MOVE 6 th GRADE TO MARION FRANKLIN MIDDLE SCHOOL

SCHOOLS IMPACTED	PROPOSED RECOMMENDATION
STEWART ELEMENTARY K-6	MOVE 6 th GRADE TO MARION FRANKLIN MIDDLE SCHOOL / ADJUST ATTENDANCE BOUNDARIES
SOUTHWOOD ELEMENTARY K-6	MOVE 6 th GRADE TO MARION FRANKLIN MIDDLE SCHOOL / ADJUST ATTENDANCE BOUNDARIES
CEDARWOOD ELEMENTARY	NEW FEEDER PATTERN INTO MARION FRANKLIN MIDDLE
PARSONS ELEMENTARY	NEW FEEDER PATTERN INTO MARION FRANKLIN MIDDLE
WATKINS ELEMENTARY	NEW FEEDER PATTERN INTO MARION FRANKLIN MIDDLE

POINTS TO CONSIDER:

- **UTILIZATION:** Building utilization at Marion-Franklin High School is extremely low, currently standing at only 53%. Having 9 elementary schools feeding into a Marion-Franklin Middle School would address any utilization concerns.
- **GRADE BAND:** Restoring South High School to a 9-12 High School (instead of 7-12) complies with favorable community support in the recent Facilities Master Planning process to have more traditional grade banding (K-5 Elementary, 6-8 Middle School, 9-12 High School).
- By adjusting the feeder pattern for our city's Southside - with all students in Grade 9-12 now attending South High School - the South building will continue to be well utilized.
- **ACADEMICS:** The larger enrollments at each grade level might also allow for more robust and diverse educational opportunities and extra-curricular offerings.
- **IMPROVED STRUCTURE:** The Marion-Franklin building is receiving significant "Operation: Fix It" repair investments (including updated HVAC and air conditioning) which make it a more welcoming and larger facility than Buckeye.

POINTS TO CONSIDER:

- **ELEMENTARY SPACE:** By removing Grade 6 and creating additional space at Fairwood, Lincoln Park, Livingston, Moler, Stewart, and Southwood would allow existing teachers and staff to better address non-academic barriers. The additional space might also allow for the addition of Pre-Kindergarten at those school, pending funding and staffing.
- **MOVE TO NEW BUILDINGS:** The additional space created by moving Grade 6 out of Southwood and Stewart also provides room to absorb the currently Siebert attendance boundary into these two buildings. It should be noted that the majority of students who currently attend Siebert do not live in the neighborhood. Changing the home schools for this neighborhood might draw students and families back to attending a school closer to home.
- For students transitioning from Siebert, building conditions are also significantly better at Southwood and Stewart, which are both new buildings.

POINTS TO CONSIDER:

- **TRUE MIDDLE SCHOOL:** Moving Grade 6 out of those six elementary schools provides a true middle school experience for those older students and complies with favorable community support in the recent Facilities Master Planning process to have more traditional grade banding.
- **POINT OF PRIDE:** High school buildings are often a focal point of pride and history in a community. By maintaining both the South and Marion-Franklin buildings, those neighborhoods retain points of pride in the schools.

SOUTH HIGH SCHOOL

(9-12)

MARION-FRANKLIN MIDDLE SCHOOL

(6-8)

LINCOLN PARK

FAIRWOOD

MOLER

LIVINGSTON

SOUTHWOOD

STEWART

PARSONS

WATKINS

CEDARWOOD

Repurpose Marion-Franklin as a Middle School.

South 7-12 becomes a traditional 9-12 High School.

351 Marion-Franklin HS students are reassigned to South HS.

397 South feeder students in grade 6,7, and 8 move to Marion-Franklin Middle School.

341 Buckeye MS students are assigned to Marion-Franklin MS.

Buckeye MS closes.

School

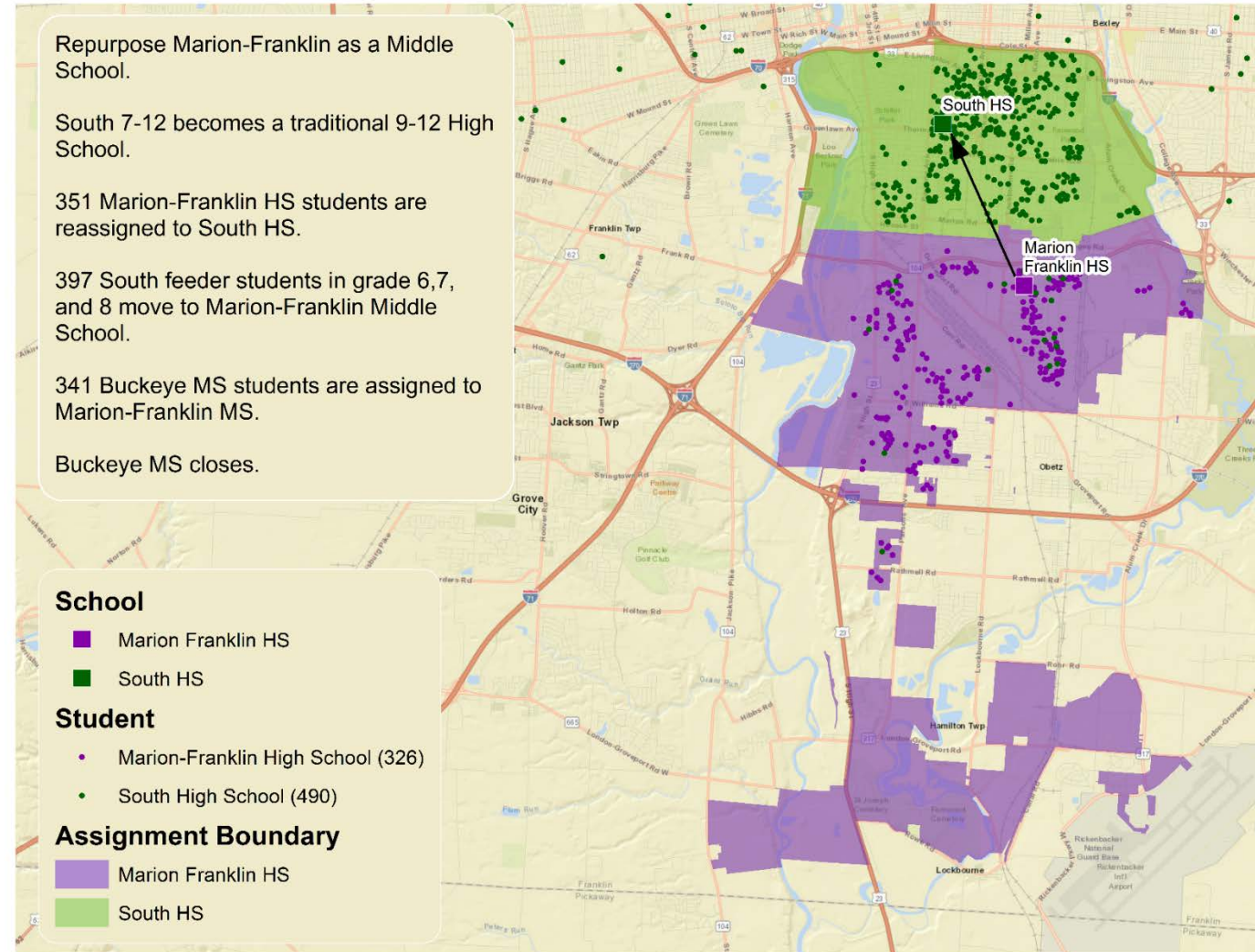
- Marion Franklin HS
- South HS

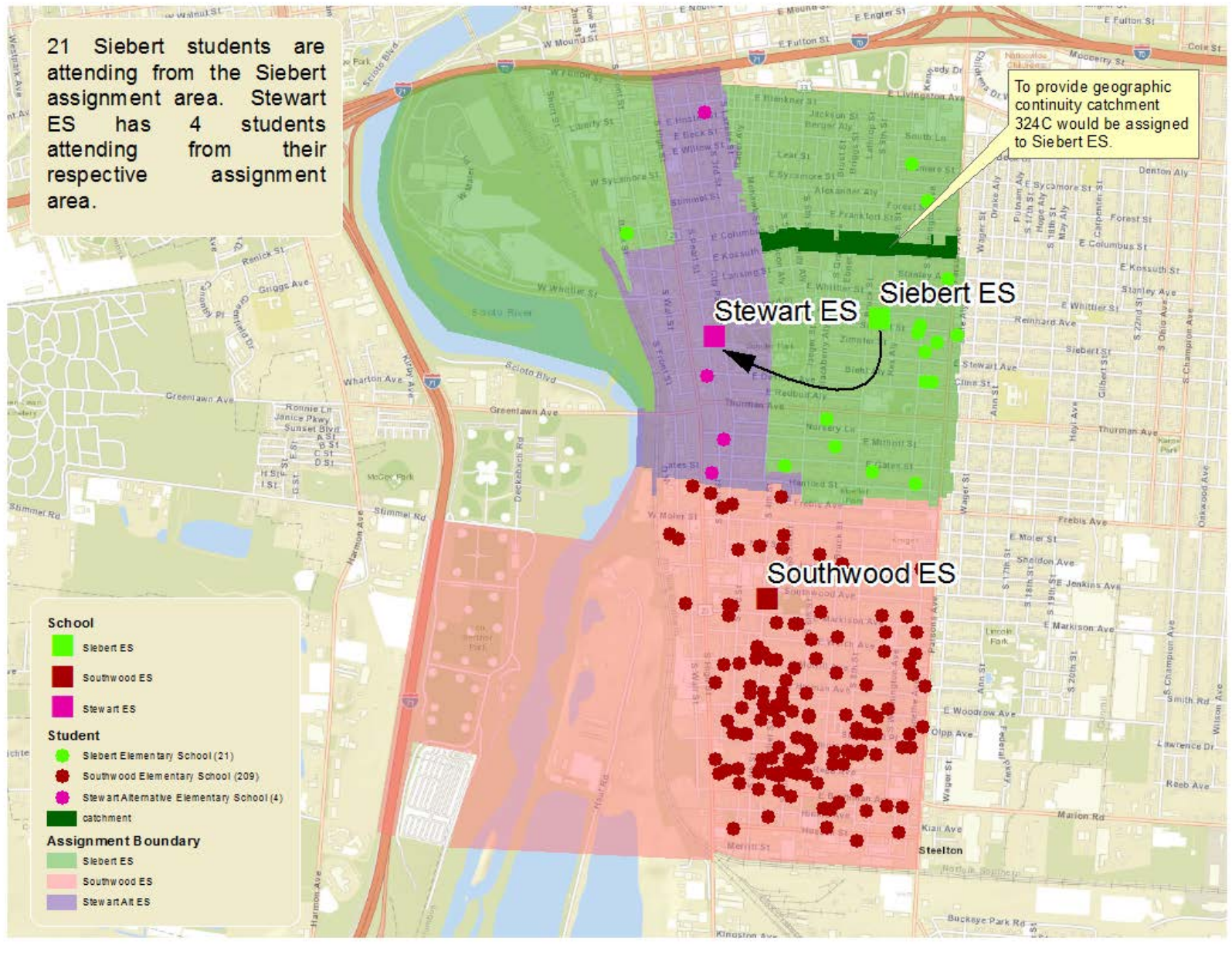
Student

- Marion-Franklin High School (326)
- South High School (490)

Assignment Boundary

- Marion Franklin HS
- South HS





SCHOOL RECOMMENDATION

SCHOOLS IMPACTED		
MARION FRANKLIN HIGH SCHOOL	LINCOLN PARK ELEMENTARY K-6	CEDARWOOD ELEMENTARY
BUCKEYE MIDDLE SCHOOL	LIVINGSTON ELEMENTARY K-6	PARSONS ELEMENTARY
SOUTH HIGH SCHOOL 7-12	MOLER ELEMENTARY K-6	WATKINS ELEMENTARY
SIEBERT ELEMENTARY K-6	STEWART ELEMENTARY K-6	
FAIRWOOD ELEMENTARY K-6	SOUTHWOOD ELEMENTARY K-6	

BY A SHOW OF HANDS...

**WHO IS HERE TO TALK MORE
ABOUT THIS SCHOOL RECOMMENDATION?**



COLUMBUS CITY SCHOOLS
2018 FACILITIES TASK FORCE

ADMINISTRATIVE SITE RECOMMENDATIONS

PRESENTATION AVAILABLE IF REQUESTED



COLUMBUS CITY SCHOOLS
2018 FACILITIES TASK FORCE

COMMUNITY FEEDBACK

CONTINUED COMMUNITY INPUT

SHARE YOUR THOUGHTS AND FEEDBACK

Make your voice heard. Community Feedback can be shared **online**, on the **CCS Mobile App**, on the **phone**, through **e-mail** or **regular mail**, and **in-person**.

- **IN PERSON: Community Meetings**

September 10 (6:00 - 7:30 p.m.)	Linden-McKinley STEM Academy (1320 Duxberry Avenue)
September 11 (6:00 - 7:30 p.m.)	Marion-Franklin High School (1265 Koebel Road)
September 13 (6:00 - 7:30 p.m.)	Cols. North International School (100 E. Arcadia Avenue)
September 20 (8:00 - 9:30 a.m.)	Columbus Education Center (270 East State Street)

- **ONLINE:** Updates and answer to common questions will be posted at **www.ccssoh.us**.

- **MOBILE APP:** Link will provide access to information and survey.

- **PHONE:** Call the Office of Customer Relations at **614.365.8888**.

- **EMAIL:** Community feedback can be emailed to **talktous@columbus.k12.oh.us**.

- **REGULAR MAIL:**

Columbus City Schools Facilities Task Force
270 East State Street
Columbus, OH 43215

CONTINUED COMMUNITY INPUT

BREAK OUT CONVERSATIONS

INDIVIDUAL VOICES: Each room will have several conversations spaces with individual facilitators so that we can best hear all of the thoughts and feedback brought here tonight.

QUESTIONS:

- Do you understand the proposed recommendation?
- What additional information do you think the Facilities Task Force should consider?
- Are there other ideas or recommendations you would propose to address the challenges/opportunities identified by the Facilities Task Force?

Your feedback will be written and shared with the members of the Facilities Task Force.



COLUMBUS CITY SCHOOLS
2018 FACILITIES TASK FORCE

COMMUNITY PRESENTATIONS

www.ccsok.us