



COLUMBUS CITY SCHOOLS
2018 FACILITIES TASK FORCE

School Recommendation 4

Draft Recommendation Approved August 30, 2018

SCHOOLS IMPACTED		
MARION FRANKLIN HIGH SCHOOL	LINCOLN PARK ELEMENTARY K-6	CEDARWOOD ELEMENTARY
BUCKEYE MIDDLE SCHOOL	LIVINGSTON ELEMENTARY K-6	PARSONS ELEMENTARY
SOUTH HIGH SCHOOL 7-12	MOLER ELEMENTARY K-6	WATKINS ELEMENTARY
SIEBERT ELEMENTARY K-6	STEWART ELEMENTARY K-6	
FAIRWOOD ELEMENTARY K-6	SOUTHWOOD ELEMENTARY K-6	

UNDERSTANDING THE PROCESS

The 2018 Facilities Task Force, comprised of volunteer family, community, and business stakeholders, is charged with reviewing data and making recommendations on schools and administrative buildings for closing or changing attendance boundaries and/or grade configurations, with recommendations based on an overall balance and objectivity of factors listed in Board Policy 7105.

Over the past four months, the community-led 2018 Facilities Task Force reviewed quantitative data, qualitative information, and impact potential as prepared by two District-led expert work teams. The three-phase process examined the following criteria:

PHASE 1 CRITERIA	PHASE 2 CRITERIA		PHASE 3 CRITERIA
STUDENT ENROLLMENT	EDUCATIONAL PROGRAM	RESIDENTIAL TRENDS	RELOCATION
BUILDING UTILIZATION	SAFETY AND ACCESS	LOTTERY WAITLIST	BURDEN
BUILDING CONDITION	ACCESSIBILITY	GRADE BAND DESIGN	DIVERSITY
STUDENT TRANSFER IN/ TRANSFER OUT RATES	FUTURE USE	EVENT ACCOMMODATION	SPACE TO ACCOMMODATE CHOICE OF SCHOOLS
	CIRCUMSTANCE	DISTRICT OPTIONS AND LIMITATIONS	ABILITY TO MAINTAIN FEEDER PATTERNS
	LOCATION AND SITE CHARACTERISTICS	WORK ORDER/FAMIS	ACADEMIC GROWTH

The Draft Recommendations approved by the Facilities Task Force in August attempt to address a combination of challenges/opportunities as identified by these criteria for these specific buildings. Using this data and information, the community-led Task Force was presented with a narrowed list of buildings across the District where changes in enrollment, attendance, and use could have a positive impact in the efficient and effective use of the building and for the District’s overall operations.

SCHOOLS IMPACTED	PROPOSED RECOMMENDATION
MARION FRANKLIN HIGH SCHOOL	CONVERT TO MARION FRANKLIN MIDDLE SCHOOL / MOVE 9-12 GRADES TO SOUTH HIGH SCHOOL
BUCKEYE MIDDLE SCHOOL	CLOSE (STUDENTS SENT TO NEW MARION FRANKLIN MIDDLE SCHOOL)
SOUTH HIGH SCHOOL 7-12	CONVERT TO HIGH SCHOOL ONLY (9-12) / MOVE 7-8 GRADES TO MARION FRANKLIN MIDDLE SCHOOL
SIEBERT ELEMENTARY K-6	CLOSE (STUDENTS SENT TO STEWART/SOUTHWOOD)
FAIRWOOD ELEMENTARY K-6	MOVE 6 th GRADE TO MARION FRANKLIN MIDDLE SCHOOL
LINCOLN PARK ELEMENTARY K-6	MOVE 6 th GRADE TO MARION FRANKLIN MIDDLE SCHOOL
LIVINGSTON ELEMENTARY K-6	MOVE 6 th GRADE TO MARION FRANKLIN MIDDLE SCHOOL
MOLER ELEMENTARY K-6	MOVE 6 th GRADE TO MARION FRANKLIN MIDDLE SCHOOL
STEWART ELEMENTARY K-6	MOVE 6 th GRADE TO MARION FRANKLIN MIDDLE SCHOOL / ADJUST ATTENDANCE BOUNDARIES
SOUTHWOOD ELEMENTARY K-6	MOVE 6 th GRADE TO MARION FRANKLIN MIDDLE SCHOOL / ADJUST ATTENDANCE BOUNDARIES
CEDARWOOD ELEMENTARY	NEW FEEDER PATTERN INTO MARION FRANKLIN MIDDLE
PARSONS ELEMENTARY	NEW FEEDER PATTERN INTO MARION FRANKLIN MIDDLE
WATKINS ELEMENTARY	NEW FEEDER PATTERN INTO MARION FRANKLIN MIDDLE

SCHOOL RECOMMENDATION 4

Convert Marion-Franklin into a Middle School (6-8), create new South High School Feeder Pattern (with South as a 9-12 High School), close Buckeye Middle School and Siebert Elementary, adjust neighborhood catchment boundaries for Stewart Elementary and Southwood Elementary, and adjust enrollment for several elementary schools (converting from K-6 to K-5 and adding Pre-K where possible).

DETAILS OF THE RECOMMENDATION:

- Marion-Franklin High School would be converted into Marion-Franklin Middle School, moving Grades 9-12 from Marion-Franklin to South High School and closing Buckeye Middle School, with students instead sent to the new Marion-Franklin Middle School.
- South High School, which currently serves Grades 7-12, would convert back to a traditional High School serving Grade 9-12 only, and South's 7-8 Grades would move to the new Marion-Franklin Middle School.
- Grade 6 from Fairwood K-6, Lincoln Park K-6, Livingston K-6, Moler K-6, Stewart K-6, and Southwood K-6 would move to the new Marion-Franklin Middle School.
- The feeder pattern for Cedarwood Elementary, Parsons Elementary, and Watkins Elementary would change to go to Marion-Franklin Middle School (instead of Buckeye Middle School).
- Attendance boundaries for Southwood Elementary and Stewart Elementary would be expanded to include the current Siebert neighborhood catchment boundary, and Siebert Elementary would be closed.

POINTS TO CONSIDER:

- Building utilization at Marion-Franklin High School is extremely low, currently standing at only 53%. Having 9 elementary schools feeding into a Marion-Franklin Middle School would address any utilization concerns.
- Restoring South High School to a 9-12 High School (instead of 7-12) complies with favorable community support in the recent Facilities Master Planning process to have more traditional grade banding (K-5 Elementary, 6-8 Middle School, 9-12 High School).
- By adjusting the feeder pattern for our city's Southside - with all students in Grade 9-12 now attending South High School - the South building will continue to be well utilized. The larger enrollments at each grade level might also allow for more robust and diverse educational opportunities and extra-curricular offerings.
- The Marion-Franklin building is receiving significant "Operation: Fix It" repair investments (including updated HVAC and air conditioning) which make it a more welcoming and larger facility than Buckeye.
- By removing Grade 6 and creating additional space at Fairwood, Lincoln Park, Livingston, Moler, Stewart, and Southwood would allow existing teachers and staff to better address non-academic barriers. The additional space might also allow for the addition of Pre-Kindergarten at those school, pending funding and staffing.
- The additional space created by moving Grade 6 out of Southwood and Stewart also provides room to absorb the currently Siebert attendance boundary into these two buildings. It should be noted that the majority of students who currently attend Siebert do not live in the neighborhood. Changing the home schools for this neighborhood might draw students and families back to attending a school closer to home.
- For students transitioning from Siebert, building conditions are also significantly better at Southwood and Stewart, which are both new buildings.
- Moving Grade 6 out of those six elementary schools provides a true middle school experience for those older students and complies with favorable community support in the recent Facilities Master Planning process to have more traditional grade banding.
- High school buildings are often a focal point of pride and history in a community. By maintaining both the South and Marion-Franklin buildings, those neighborhoods retain points of pride in the schools.

SOUTH HIGH SCHOOL

(9-12)

MARION-FRANKLIN MIDDLE SCHOOL

(6-8)

LINCOLN PARK

FAIRWOOD

MOLER

LIVINGSTON

SOUTHWOOD

STEWART

PARSONS

WATKINS

CEDARWOOD

Repurpose Marion-Franklin as a Middle School.

South 7-12 becomes a traditional 9-12 High School.

351 Marion-Franklin HS students are reassigned to South HS.

397 South feeder students in grade 6, 7, and 8 move to Marion-Franklin Middle School.

341 Buckeye MS students are assigned to Marion-Franklin MS.

Buckeye MS closes.

School

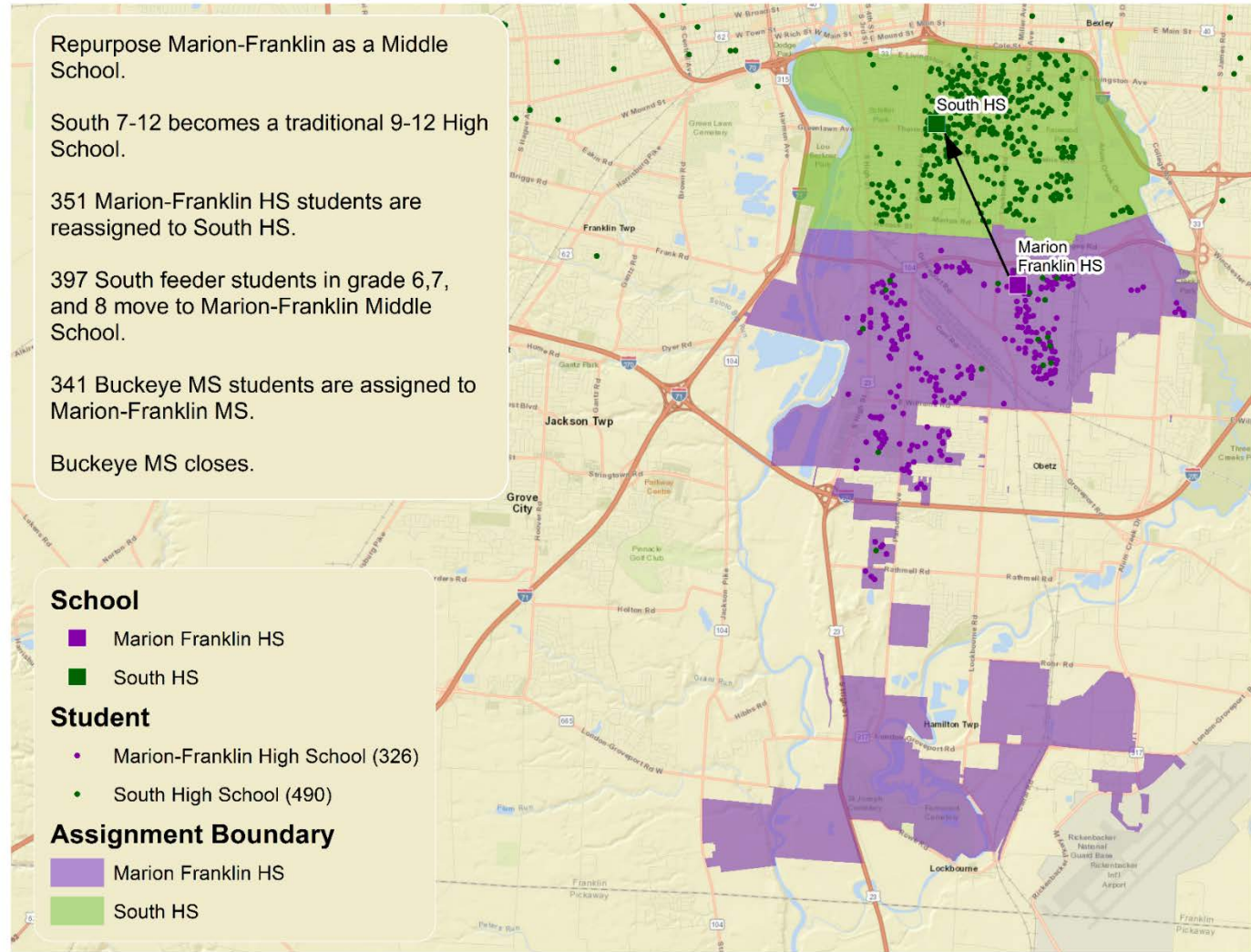
- Marion Franklin HS
- South HS

Student

- Marion-Franklin High School (326)
- South High School (490)

Assignment Boundary

- Marion Franklin HS
- South HS



Repurpose Marion-Franklin as a Middle School.

South 7-12 becomes a traditional 9-12 High School.




351 Marion-Franklin HS students are reassigned to South HS.

397 South feeder students in grade 6,7, and 8 move to Marion-Franklin Middle School.



341 Buckeye MS students are assigned to Marion-Franklin MS.

Buckeye MS closes.



School

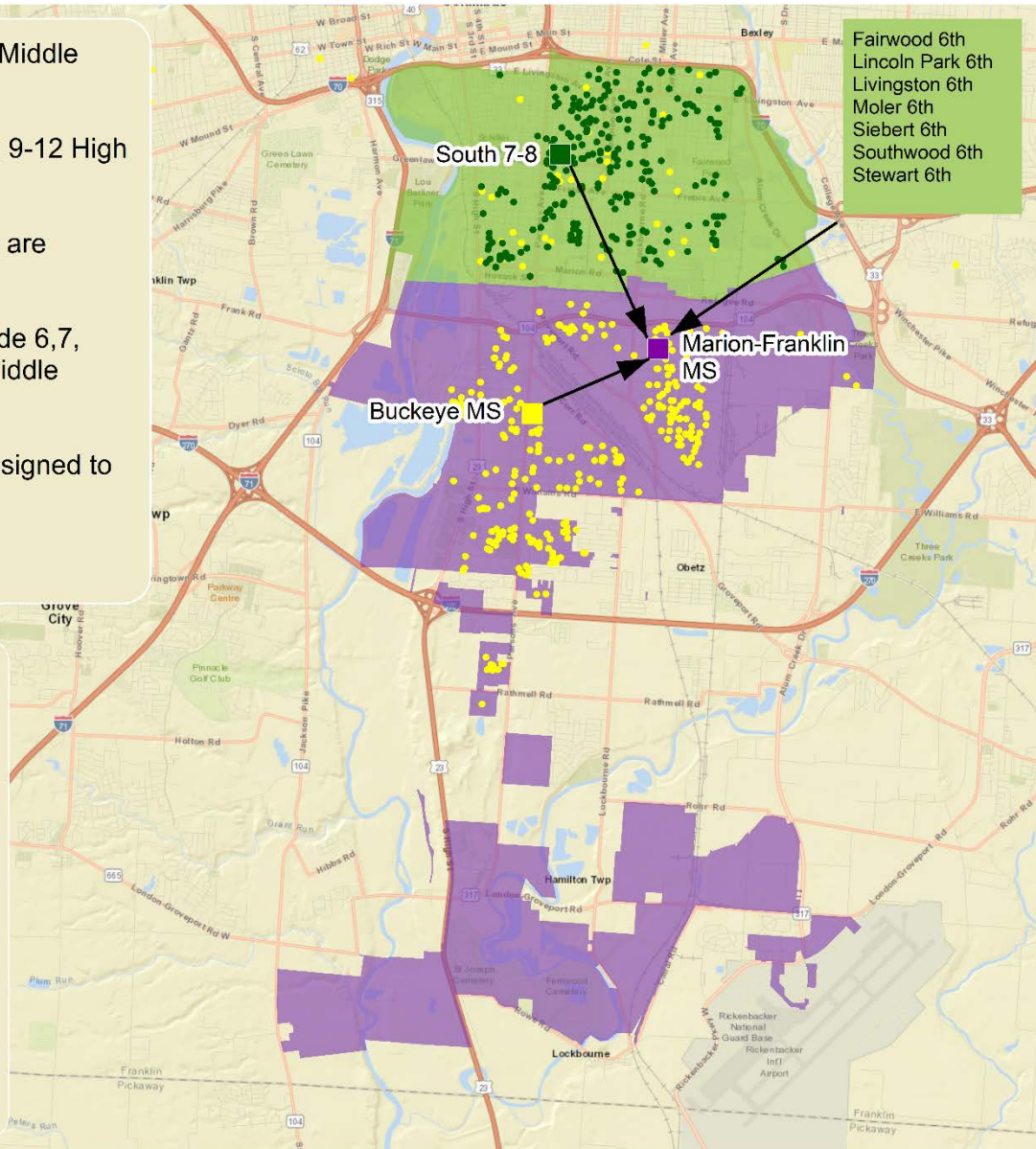
-  Buckeye MS
-  Marion Franklin MS
-  South HS

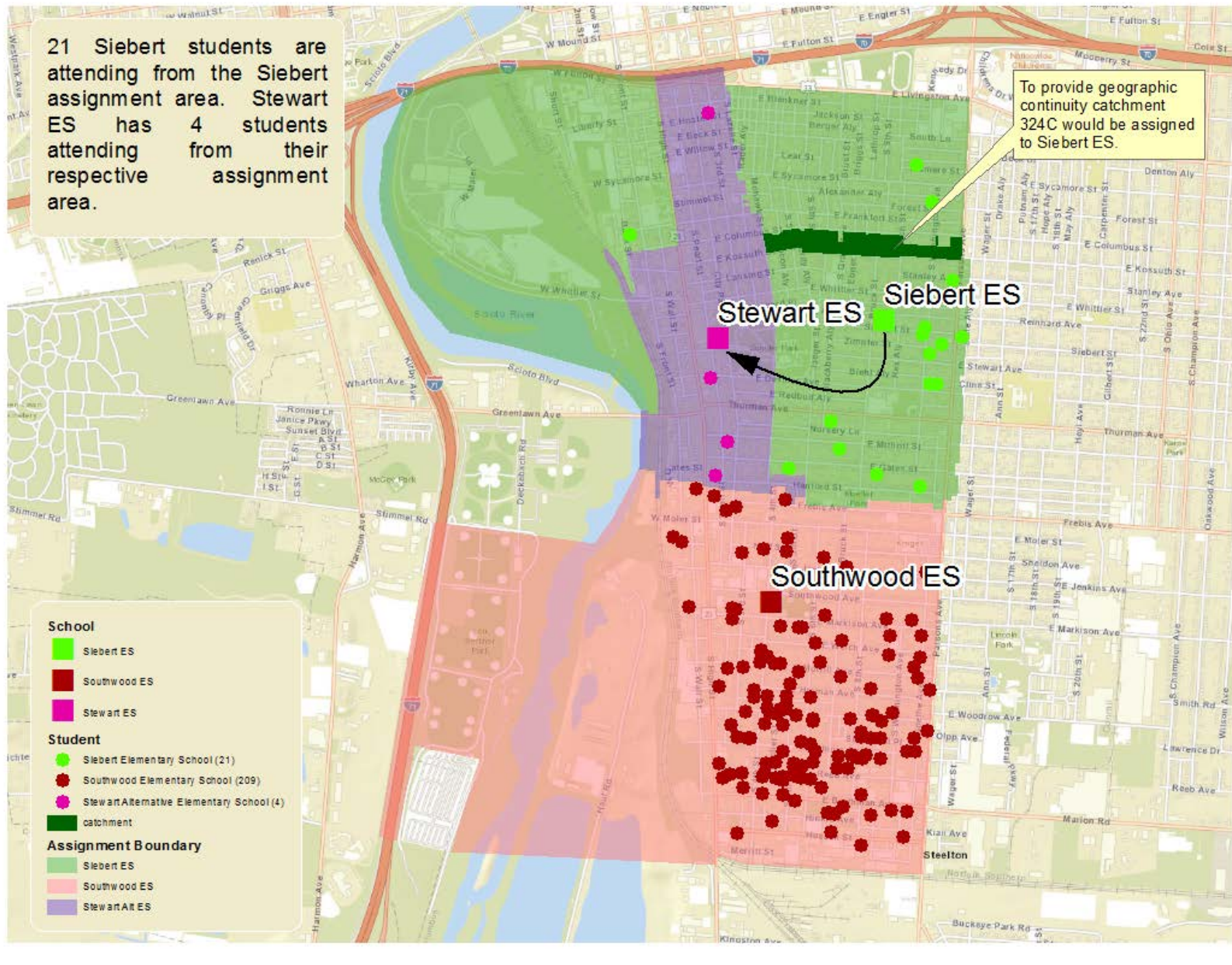
Student

-  Buckeye Middle School (396)
-  South High School (283)

Assignment Boundary

-  Marion Franklin MS
-  South HS





SHARE YOUR THOUGHTS AND FEEDBACK:

Make your voice heard. Community Feedback can be shared **online**, on the **CCS Mobile App**, on the **phone**, through **e-mail** or **regular mail**, and **in-person**.

- **IN PERSON: Community Meetings**

September 10 (6:00 - 7:30 p.m.)	Linden-McKinley STEM Academy (1320 Duxberry Avenue)
September 11 (6:00 - 7:30 p.m.)	Marion-Franklin High School (1265 Koebel Road)
September 13 (6:00 - 7:30 p.m.)	Cols. North International School (100 E. Arcadia Avenue)
September 20 (8:00 - 9:30 a.m.)	Columbus Education Center (270 East State Street)

- **ONLINE:** Updates and answer to common questions will be posted on the District website at **www.ccsOH.us**.

- **MOBILE APP:** Link will provide access to information and survey.

- **PHONE:** Call the Office of Customer Relations at **614.365.8888**.

- **EMAIL:** Community feedback can be emailed to **talktous@columbus.k12.oh.us**.

- **REGULAR MAIL:**

Columbus City Schools Facilities Task Force
270 East State Street
Columbus, OH 43215