

SIMULATION RULES

OBJECTIVE: Enroll each student at a school.

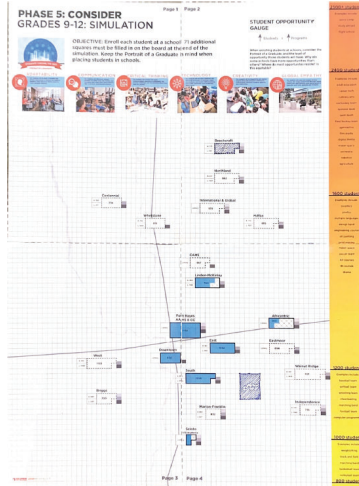
There are different numbers of students within each grade band in Columbus City Schools:

21,362 Elementary School students, 5000 of which must be enrolled at a new or renovated facility.

10,292 Middle School students, 6900 of which must be enrolled at a new or renovated facility.

13,457 High School students, 7600 of which must be enrolled at a new or renovated facility.

PROCEDURE: Print out the simulation board you would like to work on, cut around the dash border on each page, and tape it together. It should look like the image to the right, depending on which simulation board you are using.



Now that your simulation board is ready, read through these directions and use a pen or pencil to fill in the map.

1 filled in square



= 100 Students



Color in 76 squares for High School

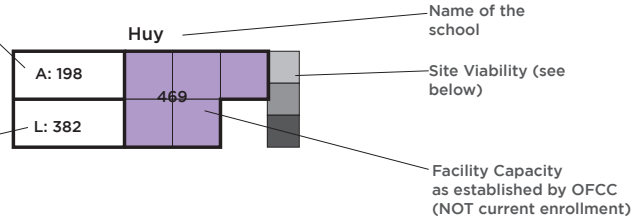
Color in 69 squares for Middle School

Color in 50 squares for Elementary School

Schools are represented by a Facility Zone.

students at neighborhood school by address (198 students go to Huy of the 382 that live nearby). This is NOT total current enrollment.

students that live in the attendance area of their home school by address (Some schools are enrolled entirely by student choice. These schools will not show Live/Attend data.)



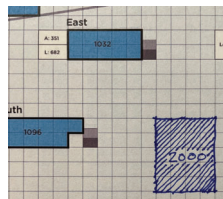
To start, buildings which have already received funds as part of a previous FMP phase (solid areas) have already been filled in with a color, purple for K-5 students, orange for Grade 6-8 students, and blue for Grade 9-12 students.

Allocate all other students by filling in a space on the grid, either within a facility zone (to show that you would like to keep students in that particular location) or outside of a facility zone (to show that a new facility should be built in the general geographic location you have selected). Color in 76 squares for High School, 69 squares for Middle School, and 50 squares for Elementary School.

Example: 12 blocks have been filled in at the Mifflin site on the Grades 9-12 board. This indicates that there are now 1200 students going to school at the current location of Mifflin HS.

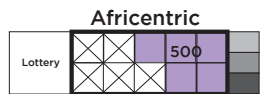


If you would like to build a new school, place blocks on the grid outside of an existing facility zone. Blocks that are adjacent to each other in this way represent a new facility.



Example: A new school with capacity for 2000 students has been built east of Northgate Intermediate.

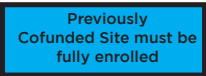
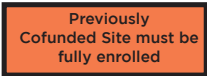
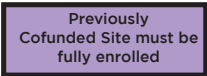
Some schools in the district do not have traditional grade bands. For example, Africentric is a K-12 facility. To represent this, an amount of “X” squares are in this school, with the “X” indicating that students from a different grade band are occupying a portion of the building capacity. If a facility has a square with an “X” then you may not play a block in that square. As you play through each of the three boards, the “X” squares will move.



You must abide by the OFCC Rules, Site Viability, and the Student Opportunity Gauge unless you want to create a variance.

OFCC RULES

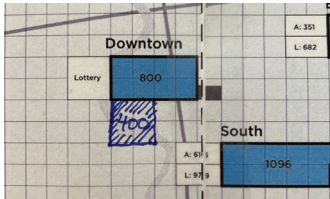
Funds will not be spent on the facilities represented with a solid border and color unless they are scheduled to increase their student capacities.



These schools must remain and either:
- Their capacities completely filled at the end of the scenario
or
- Their capacities completely filled with additional blocks placed adjacent to the facility zone.
If you choose to do this, the total enrollment at that facility must be:

- at least 600 students on the K-5 board
- at least 800 students on the Grades 6-8 board
- at least 1200 students on the Grades 9-12 board

Schools represented by a dash line only do not need to have any enrollment. However, if you choose to enroll students at one of these schools, the capacity must be at least 1,200 students.



Example: Downtown HS must have a minimum enrollment of 800 students. 400 additional students have been added to increase its enrollment to 1200, qualifying it to receive additional funding.

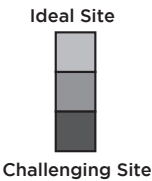
A new facility must meet the following enrollment minimums:

- at least 600 students on the K-5 board
- at least 800 students on the Grades 6-8 board
- at least 1200 students on the Grades 9-12 board

There is no limit to the number of students that may be enrolled at a facility.

SITE VIABILITY

Each school has a site viability rating. The gauge to the right of the school will indicate how viable a site is at hosting a school. Barriers to viability could include: lack of land to stage construction, lack of students living in the area, or the site is located in a flood plain. More squares indicate a more ideal facility.



STUDENT OPPORTUNITY GAUGE

When enrolling students at schools, consider the Portrait of a Graduate, and the level of opportunity those students will have. The more students that are enrolled at a facility, the more opportunity those students will have. Why do more schools have more opportunities than others? Where do most opportunities reside? Is this equitable?



VARIANCE

Columbus City Schools can veer from the rules listed below, if there is a compelling reason to do so. If you have an idea or strategy that falls outside the scope of the simulation, or breaks one of the rules listed below, describe your idea, in writing, on the board next to the school or site in question.

SEND US YOUR RESULTS

Most importantly, take a picture of your completed simulation board and send it to:

facilitiesmasterplan@columbus.k12.oh.us

PHASE 5: CONSIDER

GRADES PK-5: SIMULATION



OBJECTIVE: Enroll each student at a school squares must be filled in at the end of the si Portrait of a Graduate in mind when placing

ADAPTABILITY



Our students will be agile in thoughts and actions, responding to positive and negative feedback while balancing diverse views to reach workable solutions.



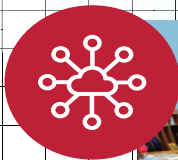
COMMUNICATION



Our students will effectively express thoughts and ideas using oral, written, and nonverbal skills while being active listeners able to decipher meaning and intention.



TECHNOLOGY



Our students will leverage traditional and emerging technology to consume, create, communicate, and connect while practicing responsible citizenship in an increasingly digital world.



CREATIVITY



Our students will be imaginative and explore original ideas and innovative solutions by transcending traditional thoughts, patterns, and relationships.



Attach this tab underneath page 2

		Devonshire			
	A: 122	325			
	L: 158				
		Salem			
	A: 223	279		A: 203	
	L: 352			L: 356	
		Gables			
	A: 288	250			
	L: 347				
		Winterset			
	A: 202	267			
	L: 427				
		Indian Springs			
	A: 213	276			
	L: 379				
		Colerain		Valley	
	A: 39	314		A: 81	
	L: 61			L: 121	
		Maize			
	A: 147		560		
	L: 394				

STUDENT OPPORTUNITY GAUGE

↑ Students = ↑ Programs

50 additional mulation. Keep the students in schools.

When enrolling students at schools, consider the Portrait of a Graduate, and the level of opportunity those students will have. Why do some schools have more opportunities than others? Where do most opportunitites reside? Is this equitable?

CRITICAL THINKING



Our students will analyze and apply evidence-based reasoning to understand "big picture" challenges and how solutions affect other parts of a system.



GLOBAL EMPATHY



Our students will value and engage diverse cultures and unique perspectives through mutual respect and open dialogue while taking action to make the world more equitable and inclusive.



800 students

Examples Include:

- robotics
- computer programming
- maker space
- laboratory

600 students (OFCC min)

Examples Include:

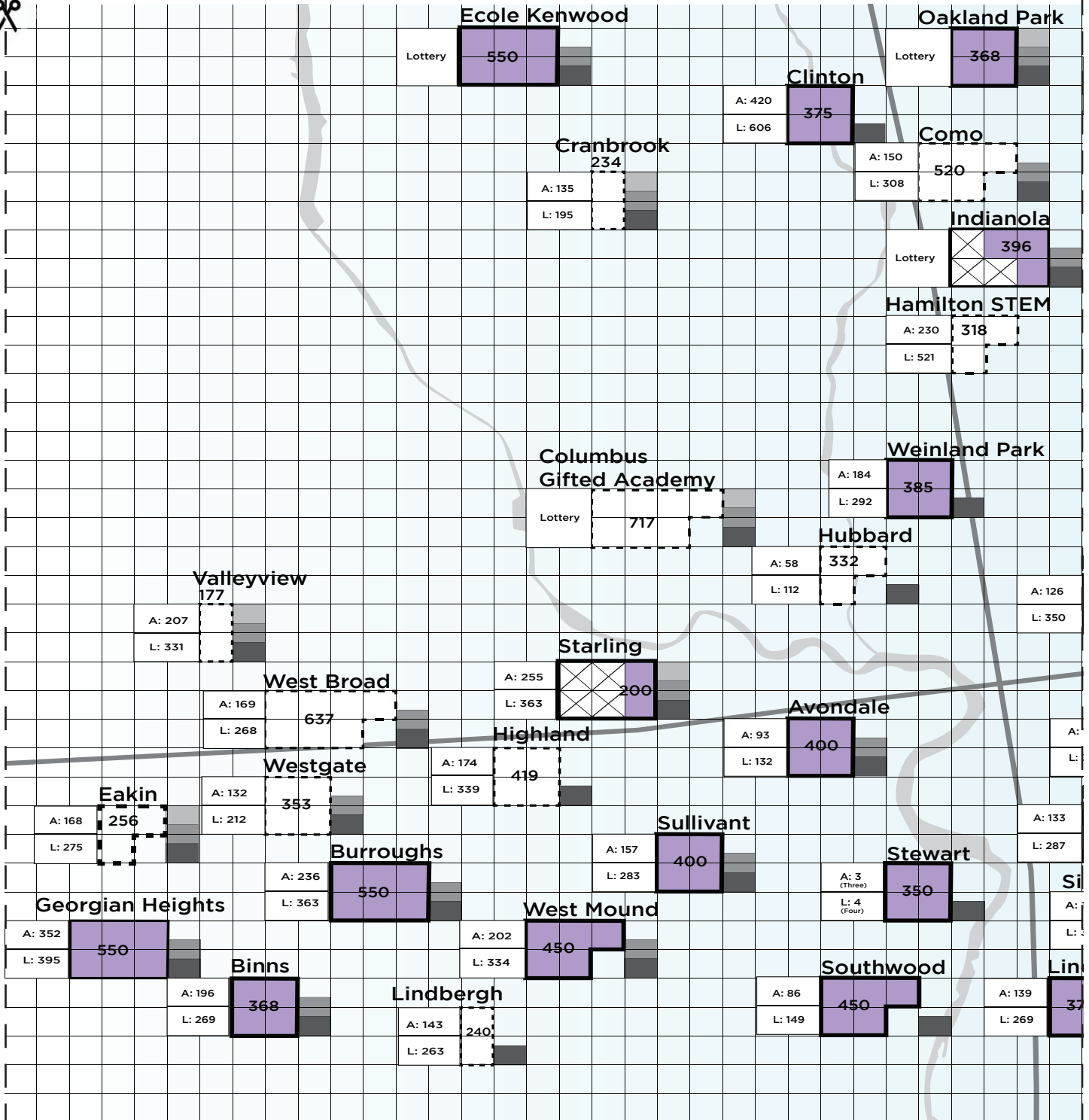
- poetry
- multiple languages
- band
- early learning

400 students

Northgate Intermediate		
A: 206	261	
L: 379		
Alpine		
A: 194	295	
L: 371		
Forest Park		
303		
Parkmoor		Avalon
		A: 359 273
		L: 511
A: 130	300	
L: 314		
Forge		Northtowne
230		196
		A: 102
		L: 162
Columbus Spanish Immersion		
Lottery	550	
North Linden		
A: 221	320	

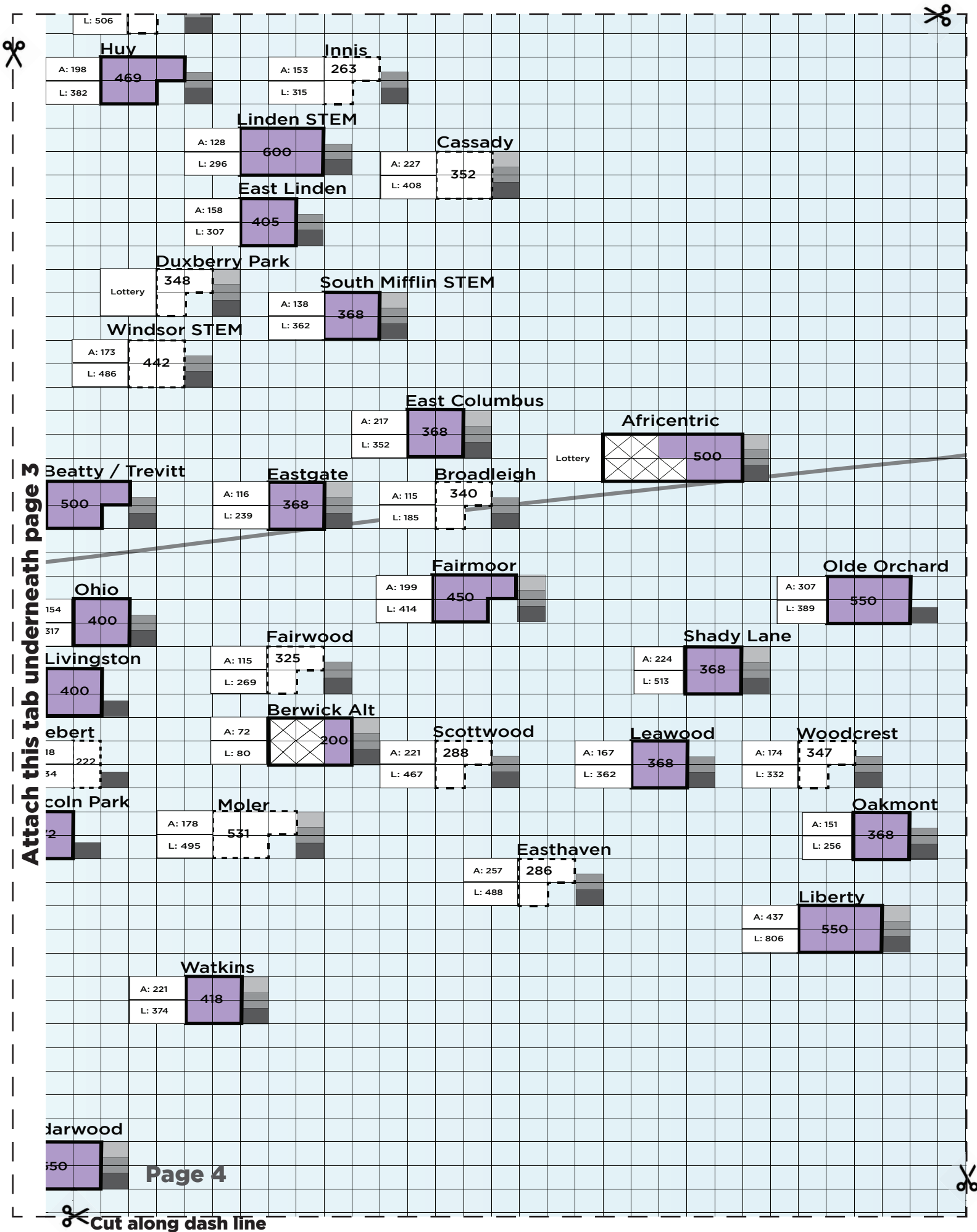
Attach this tab underneath page 4

Cut along dash line



Key Points:

- 1.) Minimum school size for Elementary Schools is **600 students**.
- 2.) Please place all comments and pictures on this side of the board.
- 3.) Please email a picture of this side of your completed simulation board to facilitiesmasterplan@columbus.k12.oh.us by December 1, 2021.



PHASE 5: CONSIDER

GRADES 6-8: SIMULATION



OBJECTIVE: Enroll each student at a school squares must be filled in at the end of the si Portrait of a Graduate in mind when placing

ADAPTABILITY



Our students will be agile in thoughts and actions, responding to positive and negative feedback while balancing diverse views to reach workable solutions.



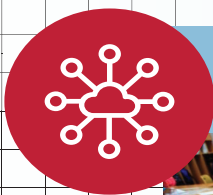
COMMUNICA



Our students will effectively thoughts and ideas using ora and nonverbal skills while be listeners able to decipher me intention.



TECHNOLOGY



Our students will leverage traditional and emerging technology to consume, create, communicate, and connect while practicing responsible citizenship in an increasingly digital world.



CREATIVITY



Our students will be imaginati explore original ideas and inn solutions by transcending trac thoughts, patterns, and relat



Attach this tab underneath page 2

Woodwar

A: 810	644
L:1119	

STUDENT OPPORTUNITY GAUGE

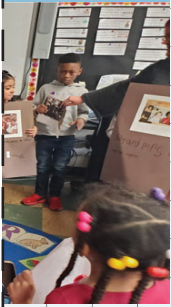
↑ Students = ↑ Programs

69 additional
mulation. Keep the
students in schools.

When enrolling students at schools, consider the Portrait of a Graduate, and the level of opportunity those students will have. Why do some schools have more opportunities than others? Where do most opportunities reside? Is this equitable?

ATION

express
l, written,
ing active
eaning and



ive and
ovative
ditional
onships.



Woodward Park
at Walden
236



d Park

CRITICAL THINKING



Our students will analyze and apply evidence-based reasoning to understand “big picture” challenges and how solutions affect other parts of a system.



GLOBAL EMPATHY



Our students will value and engage diverse cultures and unique perspectives through mutual respect and open dialogue while taking action to make the world more equitable and inclusive.



1200 students

Examples Include:

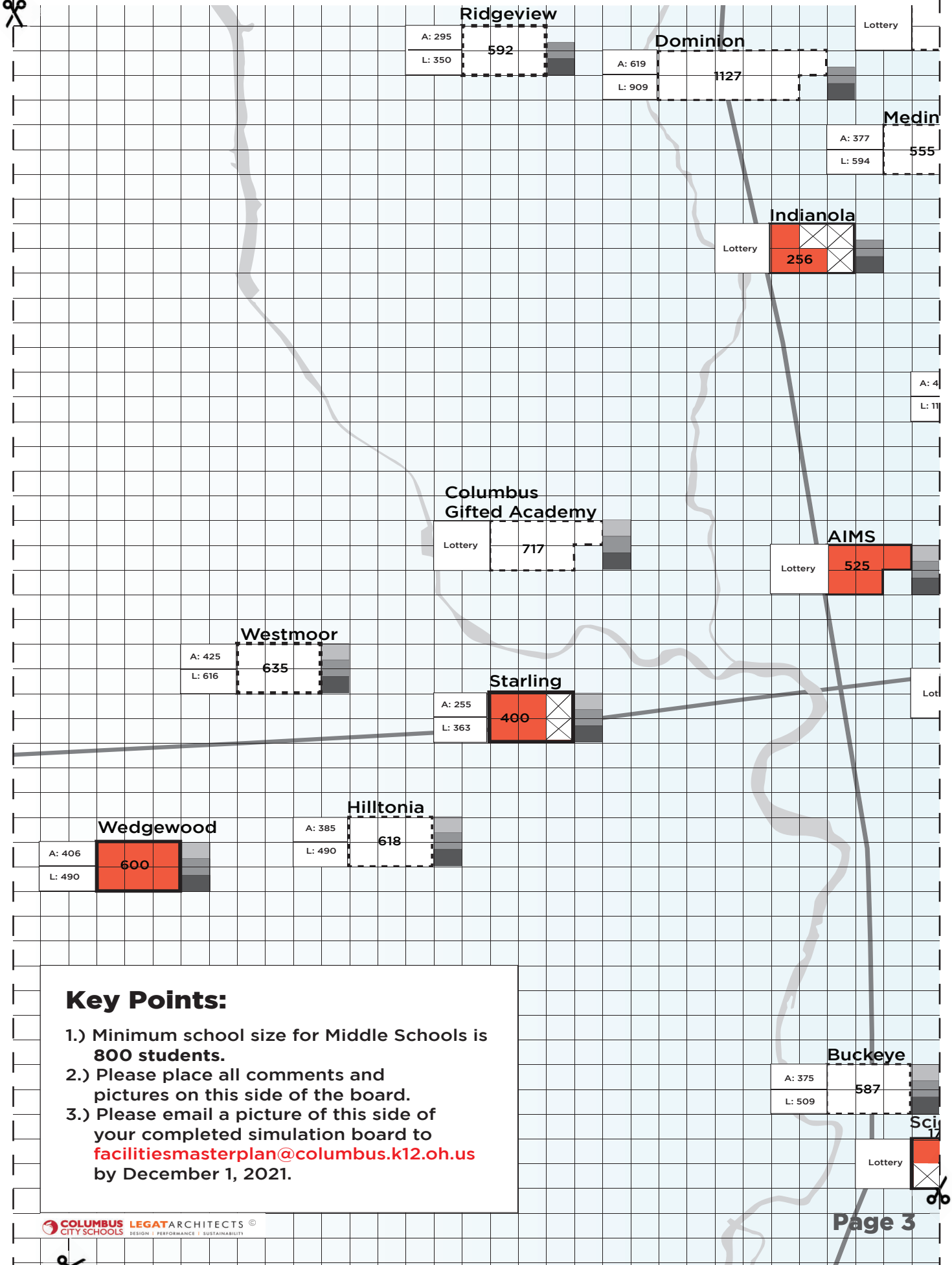
- football team
- ceramics
- poetry
- multiple languages
- strings band
- oil painting
- print making
- maker space
- soccer team
- drama

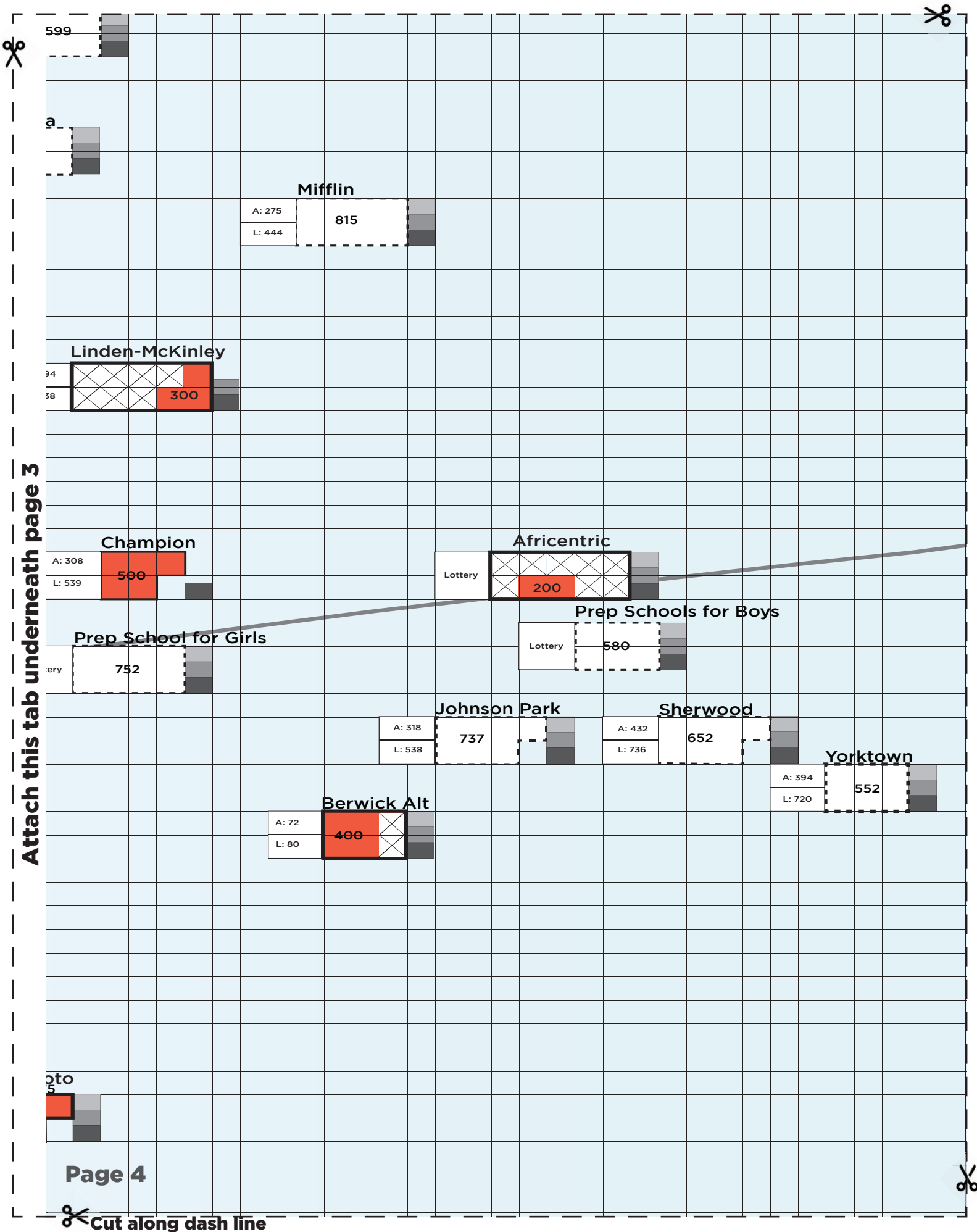
800 students
(OFCC min)

Examples include:

- baseball team
- softball team
- wrestling team
- cheerleading
- marching band
- computer programming

600 students





Attach this tab underneath page 3

599

a

Mifflin

A: 275

815

L: 444

Linden-McKinley

94

38

300

Champion

A: 308

500

L: 539

Africentric

Lottery

200

Prep Schools for Boys

Prep School for Girls

Lottery

580

752

Johnson Park

A: 318

737

L: 538

Sherwood

A: 432

652

L: 736

Yorktown

A: 394

552

L: 720

Berwick Alt

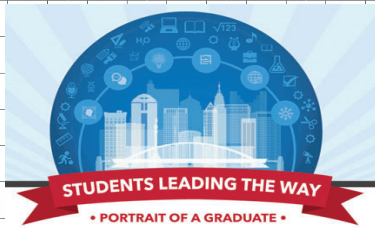
A: 72

400

L: 80

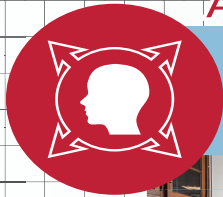
pto
5

PHASE 5: CONSIDER GRADES 9-12: SIMULATION



OBJECTIVE: Enroll each student at a school. All squares must be filled in on the board at the end of the simulation. Keep the Portrait of a Graduate in mind while placing students in schools.

ADAPTABILITY



Our students will be agile in thoughts and actions, responding to positive and negative feedback while balancing diverse views to reach workable solutions.



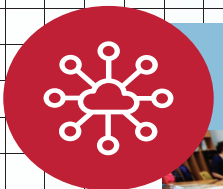
COMMUNICATION



Our students will effectively express their thoughts and ideas using oral and nonverbal skills while being active listeners able to decipher meaning from others.



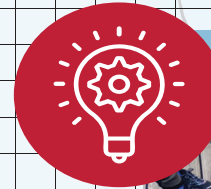
TECHNOLOGY



Our students will leverage traditional and emerging technology to consume, create, communicate, and connect while practicing responsible citizenship in an increasingly digital world.



CREATIVITY



Our students will be imaginative and explore original ideas and innovative solutions by transcending traditional thoughts, patterns, and relationships.



Attach this tab underneath page 2

76 additional
end of the
mind when

ATION

express
, written,
ing active
aning and



ve and
ovative
itional
nships.



STUDENT OPPORTUNITY GAUGE

↑ Students = ↑ Programs

When enrolling students at schools, consider the Portrait of a Graduate, and the level of opportunity those students will have. Why do some schools have more opportunities than others? Where do most opportunities reside? Is this equitable?



CRITICAL THINKING

Our students will analyze and apply evidence-based reasoning to understand "big picture" challenges and how solutions affect other parts of a system.



GLOBAL EMPATHY

Our students will value and engage diverse cultures and unique perspectives through mutual respect and open dialogue while taking action to make the world more equitable and inclusive.



Beechcroft

A: 378	914
L: 641	

Northland

A: 637	862
L: 1037	

2500+ students

Examples include:

- space camp
- study abroad
- flight school

2400 students

Examples include:

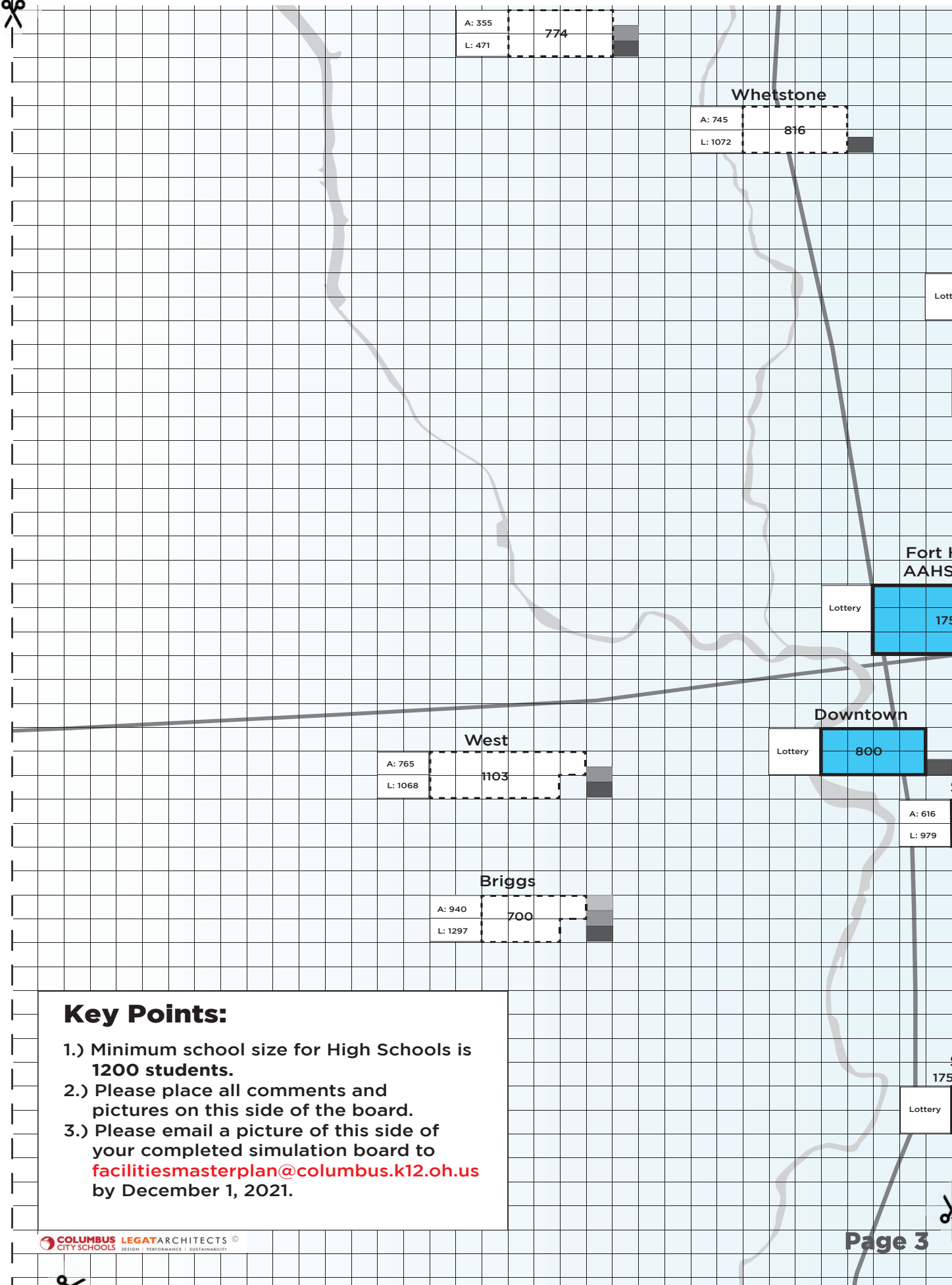
- adult education
- career tech
- culinary arts
- ice hockey team
- lacrosse team
- swim team
- field hockey team
- gymnastics
- film studio
- digital media
- maker space
- orchestra
- robotics
- agriculture

1600 students

Examples Include:

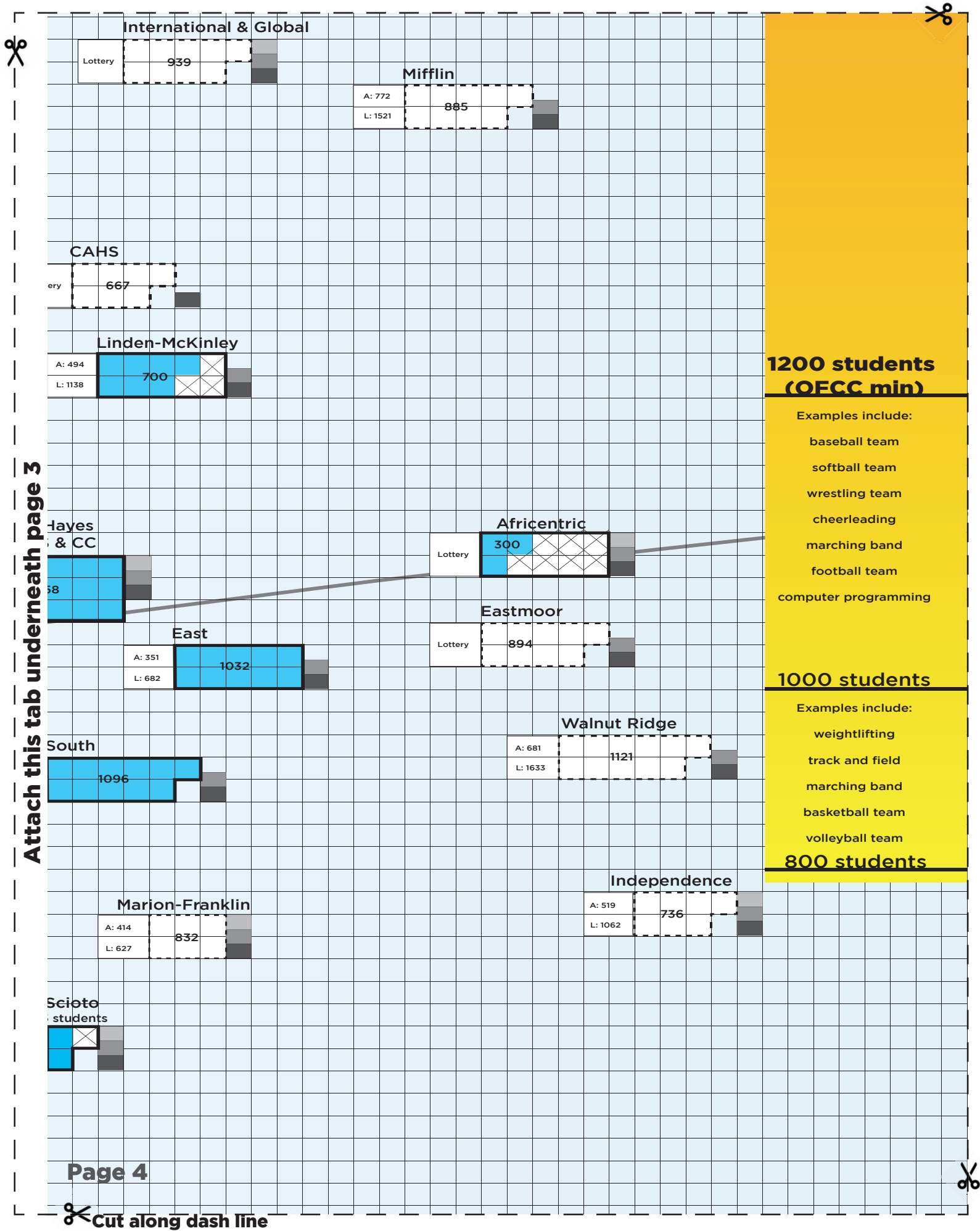
- ceramics
- poetry
- multiple languages
- strings band
- engineering courses
- oil painting
- print making
- maker space
- soccer team
- AP courses
- IB courses
- drama

Attach this tab underneath page 1



Key Points:

- 1.) Minimum school size for High Schools is **1200 students.**
- 2.) Please place all comments and pictures on this side of the board.
- 3.) Please email a picture of this side of your completed simulation board to facilitiesmasterplan@columbus.k12.oh.us by December 1, 2021.



International & Global

Lottery 939

Mifflin

A: 772
L: 1521
885

CAHS

ery 667

Linden-McKinley

A: 494
L: 1138
700

Hayes
& CC

58

Africentric

Lottery 300

Eastmoor

Lottery 894

East

A: 351
L: 682
1032

Walnut Ridge

A: 681
L: 1633
1121

South

1096

Marion-Franklin

A: 414
L: 627
832

Scioto
students

Independence

A: 519
L: 1062
736