



Superintendent's Report

September 15, 2020

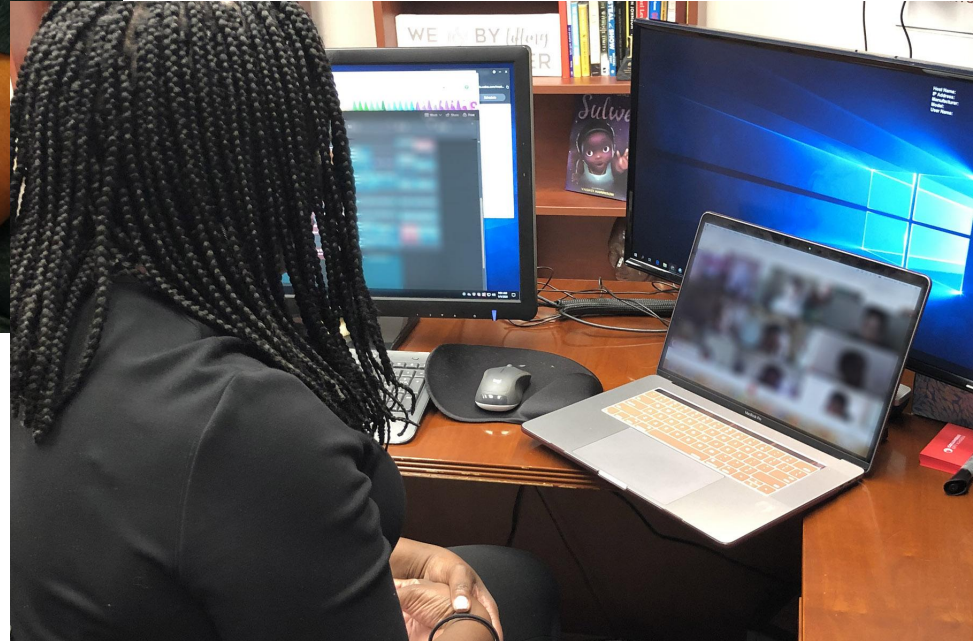
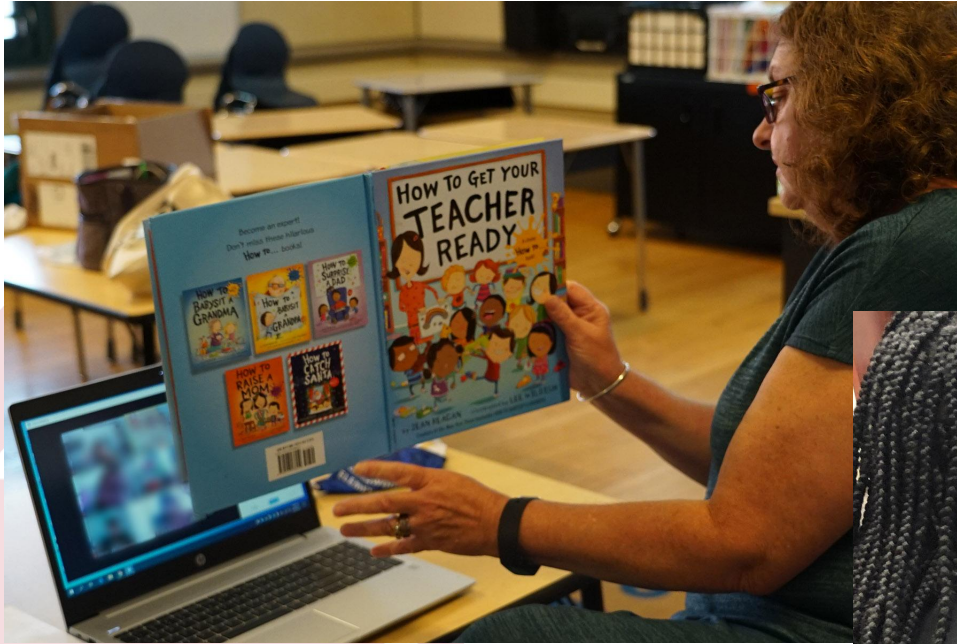


VIRTUAL FAMILY ENGAGEMENT HOUR

**Weekly on Tuesdays and Thursdays
6:00-7:00 p.m.
ccsoh.us/rsvp**



**First Day of Pre-K:
Tuesday, September 15**



Student Chromebook Distribution



	Region 1	Region 2	Region 3	Region 4	Region 5	Region 6	Total
Chromebooks Distributed (Spring & Fall)	6,419	5,272	5,365	5,961	6,617	5,758	35,392

Data as of Sept. 15, 2020

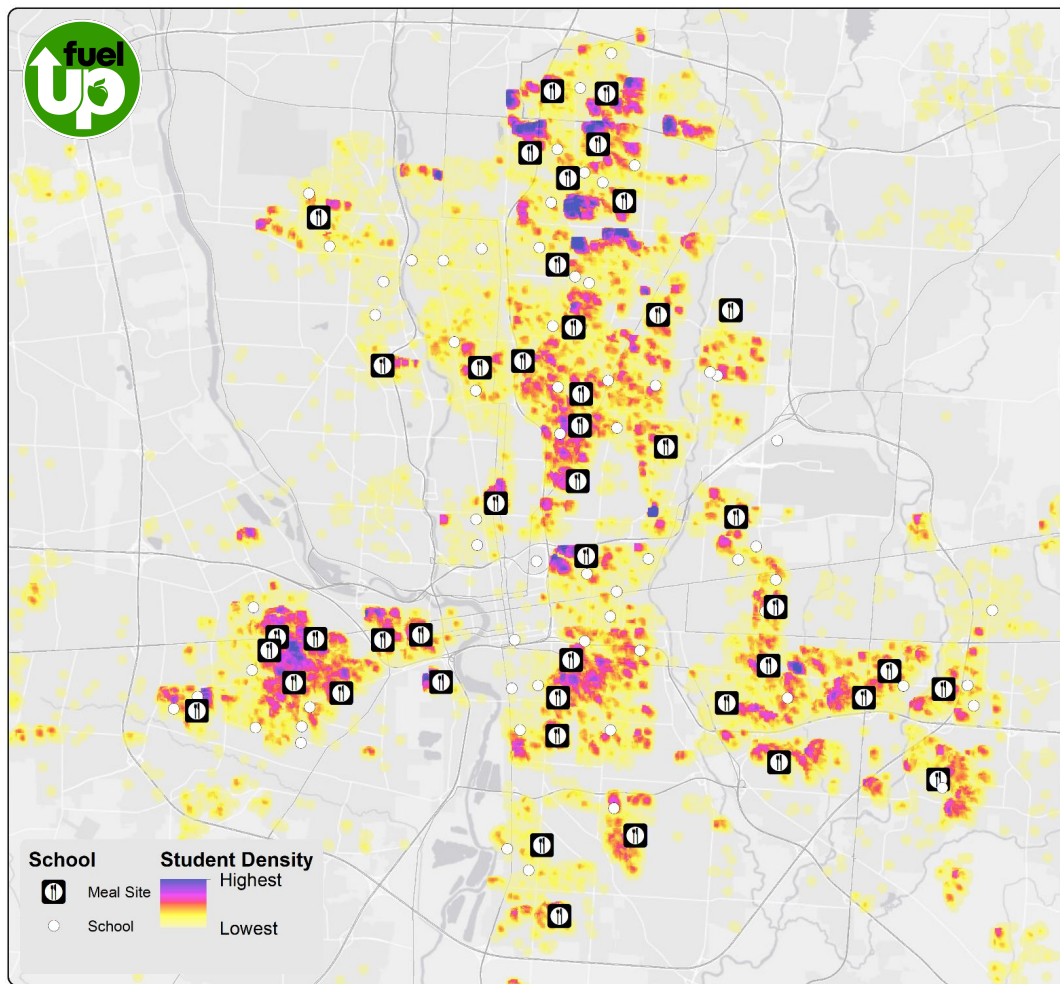
Student Enrollment



District	Students
Total CCS Enrollment	48,704
Remote Learning	45,332
Digital Academy (K-12)	3,372

Digital Academy	Students
Total Digital Academy Enrollment	3,372
Digital Academy K-5	1,824
Digital Academy 6-8	816
Digital Academy 9-12	732

Data as of Sept. 14, 2020



44 Regional Meal Sites

Region 1

West HS
Wedgewood MS
Starling K-8
Avondale ES
Burroughs ES
Highland ES
Sullivant ES
West Broad ES
West Mound ES

Region 2

Independence HS
Johnson Park MS
Sherwood MS
Easthaven ES
Leawood ES
Woodcrest ES

Region 3

South HS
Buckeye MS
Cedarwood ES
East Columbus ES
Lincoln Park ES
Livingston ES
Trevitt ES
Watkins ES

Region 4

Centennial HS
Columbus Global
Academy
Como ES
Cranbrook ES
Indianola K-8
Salem ES
Weinland Park ES

Region 5

Beechcroft HS
Medina MS
Mifflin MS
Woodward Park MS
Walden
Devonshire ES
Innis ES
Northtowne ES

Region 6

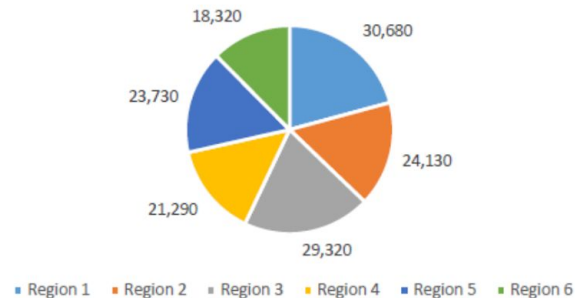
Eastmoor Academy
Linden McKinley HS
Berwick K-8
Linden Park ECE
South Mifflin ES
Windsor Stem ES

FUEL UP MEALS DISTRIBUTED: WEEK #1

REGIONAL MEAL VOLUME

REGION	SEPTEMBER 9
Region 1 (9 Sites)	30,680
Region 2 (6 Sites)	24,130
Region 3 (8 Sites)	29,320
Region 4 (7 Sites)	21,290
Region 5 (8 Sites)	23,730
Region 6 (6 Sites)	18,320
TOTAL (44 Sites)	147, 470

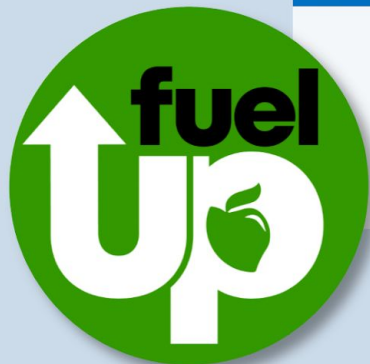
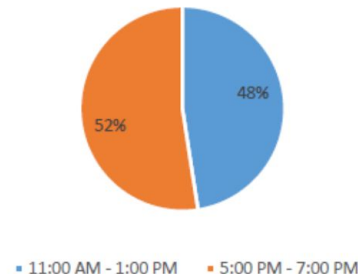
REGIONAL MEAL VOLUME DISTRIBUTION



MEAL VOLUME BY DISTRIBUTION PERIOD

11:00 a.m. ▶ 1:00 p.m.	70,130
5:00 p.m. ▶ 7:00 p.m.	77,340
TOTAL	147, 470

TIME PERIOD MEAL VOLUME DISTRIBUTION





◀ CELEBRATE**ONE**.INFO ▶

THE CITY OF
COLUMBUS

ANDREW J. GINTHER, MAYOR



Franklin County
Board of Commissioners

**JOB & FAMILY
SERVICES**

THE CITY OF
COLUMBUS
CITY COUNCIL



When your child needs a hospital, everything matters.



2021 NATIONAL MERIT SCHOLARSHIP



Jada Bledsoe | Semifinalist
Centennial High School

Fall Sports Gameday Guidelines



- All players, coaches, officials, and spectators must conduct daily COVID-19 symptom assessments. Anyone experiencing symptoms must stay home.
- Athletes and coaches must wear face coverings when not on the field or court. Face coverings are required for all game personnel.
- Cloth face coverings are permissible for athletes while engaged in active play.
- Athletes are not to share water bottles.
- Participants must maintain 6 feet of social distancing when not on the field or court.
- The visiting team is to arrive dressed in partial or full uniforms and should plan to leave the facility in partial or full uniforms.

Fall Sports Spectator Guidelines



- Spectators will be limited to two tickets per student-athlete participating in the contest. No general admission tickets will be sold.
- Spectators are expected to maintain 6 feet of social distancing from others who are not in their household while anywhere in the facility.
- Spectators are required to wear face coverings while in the facility.
- Concessions will not be available.
- No re-entry is permitted, and spectators will be required to exit the facility immediately following the game.
- Tailgating is not permitted.
- Gates will open a half-hour before the contest begins.



Ohio

School Report Cards