



columbus
symphony

Name _____

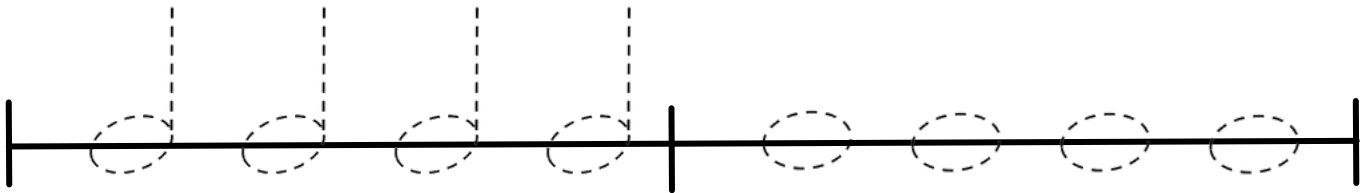
Teacher _____

Class _____

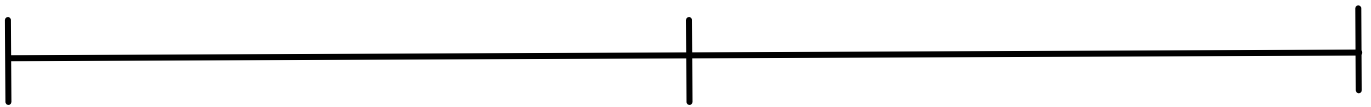
Date _____

WEEK 2: HALF NOTES AND WHOLE NOTES!

1. Trace the half notes and whole notes below. Remember, you don't need to fill in the note heads for half and whole notes!





2. Try drawing your own half notes and whole notes on the line below.



3. Music note math: add the value of the notes and rests together to find the total number of beats!

A.  +  = _____

B.  +  = _____

3. Music note math (continued)

C.  +  +  = _____

D.  +  +  = _____

E.  +  +  +  = _____

4. Composition: On the staves below, write your own four-measure musical composition using half notes and whole notes, along with quarter, eighth, and sixteenth notes. Let's use four beats per measure.

